

# Disaster Plan

## Huntsville Madison County Public Library

Forward	4
BEFORE THE DISASTER	5
Preventative (Mitigation)	
Areas of responsibility are assigned to the Disaster Planning Team	
Assets and facility information are identified	
Branch and Department Managers complete the Qualitative Risk Assessment Survey	6
Facilities checklist to help prevent disasters	
Non-Replaceable Items at Branch Libraries	7
Continuity of Operations procedures are outlined	
Insurance matters are identified	12
Preparedness	13
Companies or organizations outside the library to be used in the recovery process are identified	
Internet & Technology Services Preparedness	15
The Readiness and Emergency Procedures Plan is analyzed and updated	
Facilities checklist for managing disasters	16
Facility and Contact Information	17
Bound, printed copies of the Disaster Plan are given to each location	
Training for disasters or emergencies is made available to staff	18
Each Staff Member receives a Pocket version of the plan	
"Person in Charge in Case of Emergency" Guidelines	19
Disaster kit(s) are in place for staff, patrons and non-replaceable items in the collection	22
Disaster Kit Inspection Form	23
Disaster Recovery Team (DRT)	24
DURING THE DISASTER	25
Response	
Readiness and Emergency Management Procedures	
Emergency Codes	28
Calling 911 and the Person in Charge in Case of Emergency	
Severe Weather	31
Fire Alarm	33
Hazardous Materials	35
Shelter in Place	36
Medical Emergency	37
Power Outage	38
Workplace Violence	39
Bomb Threat	40
Pandemic Outbreak	41

Latest News on the Pandemic Flu for HMCPL	43
Protecting your Health	
Protective Area Plans	46
Bailey Cove Branch Library Protective Area Plan	
Bessie K. Russell Branch Library Protective Area Plan	47
Eleanor E. Murphy Branch Library Protective Area Plan	48
Elizabeth Carpenter Public Library of New Hope Protective Area Plan	49
Gurley Public Library Protective Area Plan	50
Madison Public Library Protective Area Plan	51
Main Library Protective Area Plan	52
Monrovia Public Library Protective Area Plan	53
Oscar Mason Branch Library Protective Area Plan	54
Showers Center Library Protective Area Plan	55
Tillman D. Hill Public Library Protective Area Plan	56
Triana Public Library Protective Area Plan	57
Evacuation Plans	58
Bailey Cove Branch Library Evacuation Route	
Bessie K. Russell Branch Library Evacuation Route	59
Eleanor E. Murphy Branch Library Evacuation Route	60
Elizabeth Carpenter Public Library of New Hope Evacuation Route	61
Gurley Public Library Evacuation Route	62
Madison Public Library Evacuation Route	63
Main Library First Floor Evacuation Route	64
Main Library Second Floor Evacuation Route	65
Main Library Third Floor Evacuation Route	66
Monrovia Public Library Evacuation Route	67
Oscar Mason Branch Library Evacuation Route	68
Showers Center Library Evacuation Route	69
Tillman D. Hill Public Library Evacuation Route	70
Triana Public Library Evacuation Route	71
AFTER THE DISASTER	72
Recovery	
The safety and well-being of the staff and patrons are ensured	
Facilities checklist for recovery	73
Material salvage of books and records	75
Continuity of library service and operations begin	81
Acknowledgements	
Appendix A: Facilities Information Form	83
Appendix B: Risk Assessment	84
Appendix D: Emergency Contact Form	86
Appendix CC: Sample Library Prep™	87
Appendix DD: Sample Library Prep™ Page Two	88
Appendix EE: Disaster Kit Inspection Form	89
Appendix FF: Emergency Flow Chart	90

Appendix GG: Accident Report	91
Appendix HH: Security Incident Report	92
Appendix II: Organizational Chart	93
Appendix JJ: Emergency Communications Tree	94
Appendix KK: Flu Sign	95
Appendix LL: Flu Placard	96

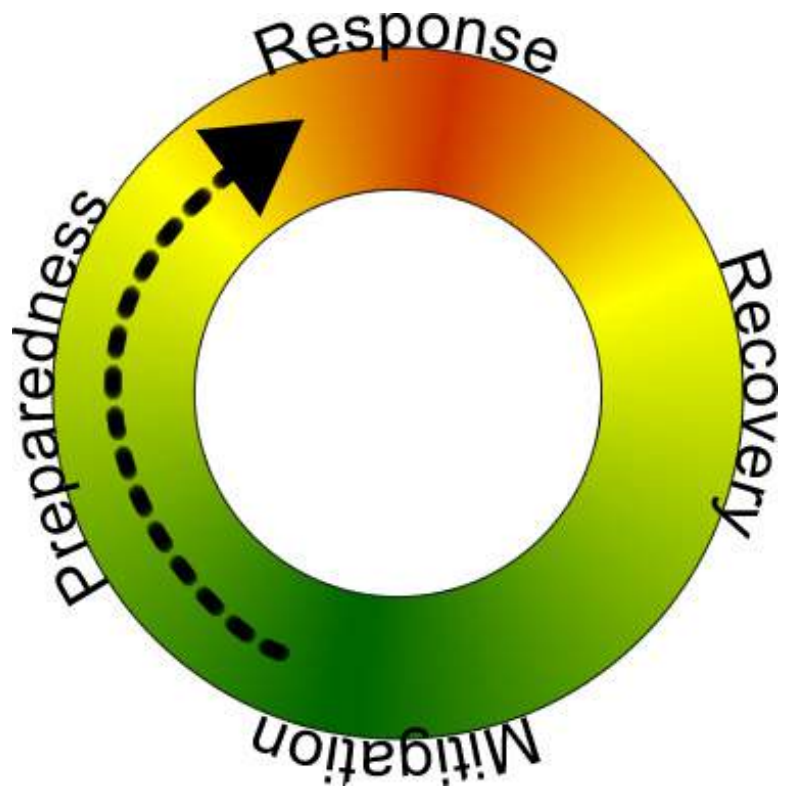
---

# Forward

**Because all libraries are susceptible to disasters, The Huntsville-Madison County Public Library is committed to maintaining a vigilant state of disaster preparedness for staff, the collection and our facilities. Enlightened self-interest tells us that to be prepared is the greatest weapon against disaster. This plan, along with continual training, provides library staff with a set of disaster priorities, emergency procedure guidelines, lists of personnel and floor plans for each location.**

Emergency operations planning activities are divided into four phases that form a cycle. The phases of the cycle are:

- Mitigation — Taking sustained actions to reduce or eliminate risk to people and property from hazards and their effects.
- Preparedness — Building the emergency management function to respond effectively to, and recover from, any hazard.
- Response — Conducting emergency operations to save lives and property by doing such things as - evacuating potential victims; providing medical care to those in need; and restoring critical services.
- Recovery — Rebuilding our library so that we can return to normal services and protect against future hazards.



Following the emergency, we learn how to mitigate, prepare, and respond better. As we revise our efforts, the cycle repeats. The phases often overlap to fit individual situations and events.

These guidelines were approved by the Library Board on February 16th, 2011, noting that the Executive Director has the authority to make immediate decisions concerning the safety of staff, patrons, and library facilities as necessary. This version has been stripped of confidential information for public consumption. The hyperlinked, online version of the original guidelines may be found on our private Intranet. A print version of the full document will be held locally at each location, in the homes of top-level management, and at the Alabama Public Library Service headquarters in Montgomery, Alabama.

**In recognition of the possibility of both small and large disasters, the Disaster Planning Team has devised the following guidelines to ensure that appropriate actions are taken before, during and after a disaster.**

## **BEFORE THE DISASTER**

### **Preventative (Mitigation)**

Mitigation efforts attempt to prevent hazards from developing into disasters altogether, or to reduce the effects of disasters when they occur. The mitigation phase differs from the other phases because it focuses on long-term measures for reducing or eliminating risk.

### **Areas of responsibility are assigned to the Disaster Planning Team**

- Members of the Disaster Planning Team and their respective duties for the plan as of September 2010 are listed on the internal-only document.

### **Assets and facility information are identified**

While our first concern is the safety of the staff and public, certain critical assets need to be protected during a disaster. Depending on the nature of the disaster at the location, these items may include, but are not limited to:

1. A printed Facility Information form
  - Names and contact information for building owners and facility managers
  - Locations of main switches for gas, water and other utilities.
  - Location of special keys to every locked door, safe, cabinet or storage closet.
  - "Other Information" on the Facility Information form might include service contracts, including daytime and evening phone numbers for contacts, payroll, banking and other vital business information
2. ITS Asset Inventory (INTERNAL, ONLINE ONLY)
  - Assets are assigned to the manager of each location or department. By browsing to the ITS helpdesk site, each manager will see their own location's assets on the assets tab. A master spreadsheet can be generated from database as needed, by ITS staff.
3. Auditor's Fixed Assets for FY10 (INTERNAL, ONLINE ONLY)
  - Includes a comprehensive list which includes any item valued over \$500 within the library system.

## Appendix A

### Facilities Information Form

# Branch and Department Managers complete the Qualitative Risk Assessment Survey

The Qualitative Risk Assessment Survey helps analyze potential risks and their impact to staff, collections or facilities. Managers from each location should complete the survey which is based on an Excel spreadsheet. Completed forms should be attached to this space, as well as held locally in both print and digital formats.

Annual review of the surveys are necessary to facilitate changing risks and events.

## Appendix B

### Risk Assessment

# Facilities checklist to help prevent disasters

- Make needed repairs to HVAC equipment, wiring, plumbing, gas, generator, roof, windows, doors
- Upgrade carpeting, repair broken or uneven flooring
- Evaluate routine maintenance procedures—improve weak areas
- Evaluate building security—improve as needed
- Maintain property insurance covering buildings and contents

# Non-Replaceable Items at Branch Libraries

This item is available in the internal-only document.

# Continuity of Operations procedures are outlined

**Continuity of Library Services and Operations:**

## **Shelter in Place**

A Shelter in Place directive is mandated by local government. Once patrons and staff are cleared to leave, the library branch or branches may be closed during a clean up if it has been affected by chemical, biological or radiological contaminants released into the environment.

## **Workplace Violence**

Immediately after an incident, the police may designate the library branch as a crime scene. They may ask that patrons and staff be detained for questioning. The PIC and supervisors will provide a safe area for patrons and staff. If possible, they will show an age appropriate movie or engage in activities to occupy time while law enforcement work. Staff will try to make patrons as comfortable as possible. Once patrons and employees are released, the building may remain a crime scene, and therefore closed for several days.

## **Severe Weather**

The library may be damaged during severe weather. Depending on the damage and repairs needed, the library branch or branches affected may be closed for an extended period of time.

## **Power Outage**

A power outage may cause a library branch or branches to close temporarily.

## **Library Closed 1-2 days:**

- The Executive Director will initiate the communications tree to keep staff informed.
- The Communications Director will inform the public of library closure.
- The Deputy and Associate Directors will set a schedule addressing the critical needs of the facility (facility checklist), including:
  - Electronic services
  - Boiler and building checks / HVAC
  - Book drop
  - Payroll
  - Other banking considerations
- The Webmaster will post closure on website, listing branches open to assist patrons displaced by closure and other pertinent information.
- The Disaster Response Team will assess the damage to the collection and respond accordingly.
- Department managers and maintenance will be called to work.
- Manual Circulation procedures will be handled if power is out.
- Counseling may be requested. Counseling sources are listed below.

### **Main Library Closed 3-7 days:**

- The Executive Director will initiate the communications tree to keep staff informed.
- The Communications Director will inform the public of library closure.
- The Deputy and Associate Directors will set a schedule addressing the critical needs of the facility (facility checklist), including:
  - Electronic services
  - Boiler and building checks / HVAC
  - Book drop
  - Payroll
  - Other banking considerations
- The Webmaster will post closure on website, listing branches open to assist patrons displaced by closure and other pertinent information.
- The Disaster Response Team will assess the damage to the collection and respond accordingly.
- Department managers and maintenance will be called to work.
- Personnel will be called in as needed until the library reopens to the public.
- Personnel will be cross trained to assist in basic circulation procedures, material extensions given.
- Telephones will be manned to assist with renewals and telephone reference if operational.
- Branch Courier will continue branch run, provided vehicle and routes are operational.
- Personnel will pull holds and send them to other branches for pick-up. If a location's materials are not accessible, IT will bypass holds on that collection.
- Reference chat services will be provided either on site or set up at a branch location.
- Full time personnel may be deployed to unaffected branches to assist with a higher volume of patrons.
- Counseling may be requested. Counseling sources are listed below.

### **Main Library Closed 8-30 days:**

- The Executive Director will initiate the communications tree to keep staff informed.
- The Communications Director will inform the public of library closure.
- The Deputy and Associate Directors will set a schedule addressing the critical needs of the facility (facility checklist) , including:
  - Electronic services
  - Boiler and building checks / HVAC
  - Book drop
  - Payroll
  - Other banking considerations



- The Webmaster will post closure on website, listing branches open to assist patrons displaced by closure and other pertinent information.
- The Disaster Response Team will assess the damage to the collection and respond accordingly. They will also determine whether volunteer assistance is warranted.
- Department managers and maintenance will be called to work.
- Personnel will be called in as needed until the library reopens to the public.
- Personnel will be cross trained to assist in basic circulation procedures, material extensions given.
- Telephones will be manned to assist with renewals and telephone reference if operational.
- Branch Courier will continue branch run, provided vehicle and routes are operational.
- Personnel will pull holds and send them to other branches for pick-up. If a location's materials are not accessible, IT will bypass holds on that collection.
- Reference chat services will be provided either on site or set up at a branch location.
- Full time personnel may be deployed to unaffected branches to assist with a higher volume of patrons.
- As the building is repaired, staff may slowly return to work assisting wherever needed.
- A temporary facility may be obtained to assist patrons and house returned materials belonging to the affected library.
- Virtual services will be emphasized, including DMZ, Learning Express Library, NoveList, HeritageQuest, reference chat, Alabama Virtual Library, netlibrary, etc.
- Counseling may be requested. Counseling sources are listed below.

### **Branch Library Closed 3-7 days:**

- The Executive Director will initiate the communications tree to keep staff informed.
- The Communications Director will inform the public of library closure.
- The Associate Director for Extension and Outreach will set a schedule addressing the critical needs of the facility (facility checklist) , including:
  - Electronic services
  - HVAC and building checks
  - Book drop
- The Webmaster will post closure on website, listing branches open to assist patrons displaced by closure and other pertinent information.
- The Disaster Response Team will assess the damage to the collection and respond accordingly.
- Branch managers of affected locations will be called to work.
- Personnel will be called in as needed until the library reopens to the public.
- Material extensions will be given.
- Telephones will be manned to assist with renewals and telephone reference if operational.

- Branch Courier will continue branch run, provided vehicle and routes are operational.
- Personnel will pull holds and send them to other branches for pick-up. If a location's materials are not accessible, IT will bypass holds on that collection.
- Full time personnel may be deployed to unaffected branches to assist with a higher volume of patrons.
- Counseling may be requested. Counseling sources are listed below.

### **Branch Library Closed 8-30 days:**

- The Executive Director will initiate the communications tree to keep staff informed.
- The Communications Director will inform the public of library closure.
- The Associate Director of Extension and Outreach will set a schedule addressing the critical needs of the facility (facility checklist) , including:
  - Electronic services
  - HVAC and building checks
  - Book drop
- The Webmaster will post closure on website, listing branches open to assist patrons displaced by closure and other pertinent information.
- The Disaster Response Team will assess the damage to the collection and respond accordingly. They will also determine whether volunteer assistance is warranted.
- Branch managers of affected locations will be called to work.
- Personnel will be called in as needed until the library reopens to the public.
- Material extensions will be given.
- Telephones will be manned to assist with renewals and telephone reference if operational.
- Branch Courier will continue branch run, provided vehicle and routes are operational.
- Personnel will pull holds and send them to other branches for pick-up. If a location's materials are not accessible, IT will bypass holds on that collection.
- Full time personnel may be deployed to unaffected branches to assist with a higher volume of patrons.
- As the building is repaired, staff may slowly return to work assisting wherever needed.
- A temporary facility may be obtained to assist patrons and house returned materials belonging to the affected library.
- Virtual services will be emphasized, including DMZ, Learning Express Library, NoveList, HeritageQuest, reference chat, Alabama Virtual Library, netlibrary, etc.
- Counseling may be requested. Counseling sources are listed below.

### **Counseling Sources:**

Alabama Board of Examiners in Counseling: <http://www.abec.alabama.gov/>

Alabama Counseling Association: <http://www.alabamacounseling.org/>

Alabama Mental Health Counselors Association: <http://almhca.com/home/htm>

American Counseling Association: <http://www.counseling.org/>

American Psychiatric Association: <http://www.psych.org/>

American Psychological Association: <http://www.apa.org/>

American School Counselor Association: <http://www.schoolcounselor.org/>

Distance Credentialed Counselor: <http://www.cce-global.org/credentials-offered/dccmain>

National Board for Certified Counselors: <http://www.nbcc.org/>

# Insurance matters are identified

Based on materials inventory, fixed assets, ITS continuity of operations procedures, and the Qualitative Risk Assessment the Executive Director confirms annually that insurance coverage is current and/or issues are identified.

HMCPL Insurance Broker:

This item is available in the internal-only document.

Local / Branch Insurance Coverage:

- Bailey Cove Branch Library: Building and contents
- Bessie K. Russell Branch Library: Building and contents
- Eleanor E. Murphy Branch Library: Building and contents
- Elizabeth Carpenter Public Library of New Hope: Contents Only
- Gurley Public Library: Contents Only
- Madison Public Library: Contents Only
- Main Library: Building and contents
- Monrovia Public Library: Contents Only
- Oscar Mason Branch Library: Contents Only
- Showers Center Library: Contents Only
- Tillman D. Hill Public Library: Contents Only
- Triana Public Library: Contents Only

## Preparedness

Preparedness is a continuous cycle of planning, organizing, training, equipping, exercising, evaluation and improvement activities to ensure effective coordination and the enhancement of capabilities to prevent, protect against, respond to, recover from, and mitigate the effects of natural disasters, acts of terrorism, and other man-made disasters.

## Companies or organizations outside the library to be used in the recovery process are identified

The Disaster Team's preservation specialist recommends the following organizations and personnel when the library is faced with a major disaster:

- WesternStates and Territories Preservation Assistance Service. Our contact is Randy Silverman 801-585-6782 [rsilverman@westpass.org](mailto:rsilverman@westpass.org) or [randy.silverman@utah.edu](mailto:randy.silverman@utah.edu)

- Reputable commercial disaster recovery firms recommended and used by Randy Silverman:
  - Kirk Lively Director of Technical Services Belfor USA 2425 Blue Smoke Ct. S. Fort Worth, Tx. 76105 Tel. (817)535-6793 Toll free 24-hour: (800)856-3333 kirk@us.belfor.com
  - Munters Corporation Moisture Control Services Headquarters Chicago District Office & Midwest Region Document Center 2008 Bloomingdale Rd. Glendale Heights, Il 60139-2192 Tel: 1800-MUNTERS mcsinfo@munters.com
- Preservation Division, University of Utah Marriott Library Collection Disaster 888-905-7737 or 801-581-5147

Other companies with a business relationship with the library which may be of assistance:

ServePro of North Huntsville	256-534-1177	Emergency remediation
Allied Waste Services	256-837-2670	Solid waste collection, transfer and disposal services
American Standard Window Cleaning	256-534-9010	Building cleaning and maintenance services
AREN/ASC	256-971-7448	Internet, email, network services
City of Huntsville General Services	256-427-5660	HVAC, electrical, plumbing support services
Coleman Landscaping	256-880-7830	Landscaping services
Cook's Pest Control	256-772-2440	Termite and pest control
Commercial Flooring Services, Inc.	256-722-9302	Commercial flooring products and installation
Conditioned Air Solutions	256-428-1983	HVAC contractor.
Dorma-Carolina Door Controls	205-833-8782	Automatic doors repair
Generator Service Co., Inc.	205-744-7572	Generator maintenance service
Goss Electric Industrial Division	256-355-1101	Electrical contractors

Hydro Chemicals	423-899-5487	Water treatment services
Jani-King Huntsville Region	256-971-3451	Commercial cleaning services
JanPak-Huntsville	256-851-2100	Office supplies
Kleen Air Research	256-767-5122	HVAC filters service
Koorsen Fire & Security Inc	256-536-0786	Fire protection systems
LockTec Inc	256-881-9300	Locksmith
Madison Locksmith & Safe Co.	256-772-0371	Locksmith
Monaghan Construction	256-656-4897	General contractor
Porter Roofing	931-668-2298	Roof repair and replacement
Quality Glass	256-534-4322	Automatic glass door repair
Professional Security Systems, Inc.	256-534-6523	Security systems repair and service
Rock-Tenn	256-533-9888	Book and periodicals recycling
Roto-Rooter Plumbers	256-533-7246	Plumbing contractors
Schindler Elevator Corporation	205-252-5148	Elevator repair
Scott Lighting Supply Company, Inc.	256-536-6776	Lighting supplies
SirsiDynix	1-800-288-8020	ILS automation system
Sonshine Audio	256-232-4364	Audio-visual technologies
Systems Technology Co of Alabama, Inc.	256-518-9000	Fire protection and card access systems

Tom Woo Home Improvements	256-457.9004	General repairs
Waste Management of AL-N	800-333-7705	Solid waste collection, transfer and disposal services

## Internet & Technology Services Preparedness

In order to facilitate recovery of computer-based services, the attached document details hardware, software, and services inventory, as well as locations and descriptions of information backups.

### Appendix C

This item is available on the internal-only document.

## The Readiness and Emergency Procedures Plan is analyzed and updated

Each September, during National Preparedness Month, The Readiness and Emergency Procedures Plan will be reviewed for personnel changes.

- Managers should update their Emergency Contact Forms, keeping both a digital and printed copy in each location and off-site.
- Managers should update their Communication Tree.

### Appendix D

Emergency Contact Form

## Facilities checklist for managing disasters

- Maintain attached checklist of facility information and provide to staff, including:
  - Water—shut off valve location
  - Electrical—turn off switches location

Gas—shut off valve location

- Maintain list of key contacts for inspection and repair of structural elements and facility systems
- Maintain fire and building alarms
- Maintain fire extinguishers and halon systems
- Maintain contact with community emergency services
- Evaluate building signage and update/improve as needed
- Identify important items in collection
- Purchase plastic sheeting, tape, garbage bags, gloves, mops, brooms and other cleaning supplies
- Keep in good working order all vacuum cleaners and wet-vac
- Investigate and identify salvage facilities and companies
- Provide staff training on how to respond to a variety of disasters
- Advance warning of disaster:
  - Move items away from windows and to higher floors
  - Secure windows and doors with plywood and other rigid materials
  - Cover or wrap special collections with plastic sheets and seal with waterproof tape

## Facility and Contact Information

These facility and contact information documents should be reviewed and updated annually or when items change to ensure the latest information is available to staff in the event of an emergency.

- Bailey Cove Branch Library
  - Contact Information
  - Facilities Information
- Bessie K. Russell Branch Library
  - Contact Information
  - Facilities Information
- Eleanor E. Murphy Branch Library
  - Contact Information



- Facilities Information
- Elizabeth Carpenter Public Library of New Hope
  - Contact Information
  - Facilities Information
- Gurley Public Library Madison Public Library
  - Contact Information
  - Facilities Information
- Madison Public Library
  - Contact Information
  - Facilities Information
- Main Library
  - Contact Information
  - Facilities Information
- Monrovia Public Library
  - Contact Information
  - Facilities Information
- Oscar Mason Branch Library
  - Contact Information
  - Facilities Information
- Showers Center Library
  - Contact Information
  - Facilities Information
- Tillman D. Hill Public Library
  - Contact Information
  - Facilities Information
- Triana Public Library
  - Contact Information
  - Facilities Information

#### **Appendices E - BB**

These items are available on the internal-only document.

## **Bound, printed copies of the Disaster Plan are given to each location**

Each location will receive a three-ring notebook with an area-specific Disaster Plan. Updates to any part of the plan will be added as necessary.

# Training for disasters or emergencies is made available to staff

With managerial support, a series of blended learning opportunities will be available for staff. Persons In Charge during an Emergency will also be offered expanded training.

## Each Staff Member receives a Pocket version of the plan

Based on the Pocket Response Plan (PReP)<sup>TM</sup> is a concise document for recording essential information needed by staff in case of a disaster. Every staff member should carry a PReP with them at all times. The PReP is one component of CoSA's Framework for Emergency Preparedness.

Location-specific pocket versions of this disaster plan are available for:

- Bailey Cove Branch Library
- Bessie K. Russell Branch Library
- Eleanor E. Murphy Branch Library
- Elizabeth Carpenter Public Library of New Hope
- Gurley Public Library
- Madison Public Library
- Main Library 1st Floor
- Main Library 2nd Floor
- Main Library 3rd Floor
- Monrovia Public Library
- Oscar Mason Branch Library
- Showers Center Library
- Tillman D. Hill Public Library
- Triana Public Library

### Appendix : CC

Sample Library Prep<sup>TM</sup>

### Appendix DD

Sample Library Prep<sup>TM</sup> Page 2

# "Person in Charge in Case of Emergency"

## Guidelines

Being a "Person in Charge in Case of Emergency" (PIC) involves your ability to lead in a crisis situation. Based on the "Tag, you're it! Implementing a "Person in Charge" Training Program " work by Adrienne Peterson of the Jefferson County Public Library System, and John Cabrera and Brett Lear of the Multnomah County Library, this model focuses on having one person serve as the primary coordinator during emergency situations.

Your first responsibility as PIC is the safety of patrons and staff. The most important thing to do in an emergency is remain calm.

### What HMCPL expects of PICs:

- You will use common sense.
- You will make a decision to the best of your ability
- You can tell the difference between and know how to act upon real emergencies and routine problems.
- You can tell the difference between an eccentric and problem patron. And if you're not sure, you'll take the time to gather some facts before acting.
- You know your resources within the library including the Emergency Procedures Guide and other policies and procedures in the online Policy Manual.
- Prioritizing the situation, delegating tasks to other supervisors and staff members.

### How to tell if it's an emergency:

- Is someone injured or in physical danger?
- Look for the three "b's" – blood, bones, breathing. If you can see blood or bones, or if they aren't breathing, it's an emergency.
- Is there fire or smoke? Are alarms going off?
- Are genitals exposed?
- Is anyone's property threatened or damaged?
- Is anyone verbally threatening staff or other patrons? Interfering with others use of the library?

### Which of these scenarios qualify as an emergency?

- A patron says the men's room is on fire. (CHECK BATHROOM FIRST FOR STATUS, THEN CALL 911 IF NEEDED)
- Someone trips on the front sidewalk and goes through the glass entrance door. (CHECK FOR BLOOD OR INJURIES. IF INJURED CALL 911\*\*)
- A patron is arguing with Circ staff over a \$5.00 fine. (NO)

- There is a fierce hailstorm outside and it's closing time. (WE DON'T WANT TO ENDANGER SOMEONE; KEEP PEOPLE INSIDE).

**\*\*Note:**It is always okay to call 911 if you are worried about the health of staff or a patron in the library.

Once emergency personnel arrive, it is up to them to discuss options with the patron and decide the best course of action to take and whether that involves a trip to the hospital. It is not for the PIC or any other library personnel to make a decision about whether a patron should go to the hospital. The library does not call any ambulance company directly nor offer for the library to cover their medical costs (ambulance trip or otherwise).

Calling for help in an emergency:

- Verify for yourself what is happening without getting in the middle of it.
- When calling 911, be as succinct as possible and clearly state what kind of emergency it is.
- It will move things along if you use the phrase "in progress."
- "We have a medical emergency in progress at the Lakewood Library at 10200 W. 20<sup>th</sup> Ave. An older man has fallen off his chair and isn't responding. He is breathing."
- "We have a disturbance in progress in the parking lot of the Wheat Ridge Library. The address is 5475 W. 32<sup>nd</sup> Ave. There are two men fighting. I haven't seen any weapons."

911 operators will want someone to stay on the line to keep them posted on the developing situation and verify more information which they relay to the responding personnel. If you have made the call and need to be elsewhere to supervise activities, hand the phone over to another staff member.

- A general rule is if there is a potentially life or property-threatening situation going on in your building, your parking lot or library grounds, you should call 911 or designate someone else on the staff to make the call.

### **Daily Responsibilities or Tasks**

Upon reporting for work check the schedule to see if you are the Person in Charge in Case of Emergency during your shift.

1. Consult the Person in Charge in Case of Emergency flowchart or the staff schedule to determine if you are to be held responsible for the position that day.
2. If your location has a PIC cell phone make sure you wear the phone in your pocket or clipped to your belt. If you are required to leave the area *at any time* hand off the phone to the next PIC in line according to the chart. Be sure to regain control of the PIC cell phone when you return.

3. Make sure your name is written on the "Person in Charge" whiteboard in your area.

## **Weekly Responsibilities or Tasks**

The 'top-level' Person in Charge in Case of Emergency in each location should test or re-supply certain items and then report via email to their supervisor and the Staff Training & Volunteer Coordinator the status of each:

- First Aid Kit should remain well-stocked
- Weather Radio should remain plugged in and set to audible alarm
- Flashlights should have working batteries\*
- Portable radios should have working batteries\*
- Smoke and/or Carbon Monoxide detectors should have working batteries
- Hand sanitizers and cleansing wipes for staff and patrons

\*A person in each department should be designated to check the batteries weekly.

**Please see the Emergency Procedures Guidelines for specific instructions relating to the PIC responsibilities:**

- Severe Weather
- Shelter in Place
- Medical Emergency
- Power Outage
- Workplace Violence
- Fire Alarm
  - Concerning the fire alarm (Systems Technology) panel at Main: if the alarm is activated the only persons authorized to disable or silence the alarm are the fire department or Systems Technology. If we have a situation when we know it's a false alarm call Systems Technology at 256-518-9000.
- Bomb Threat
- Pandemic Outbreak

## **Documentation**

- It isn't over until the documentation is done.
- Accident and Incident Report forms are available online and in your Emergency Procedures notebook. These forms are used for information – they are not used to check up on how you did.
- If anyone has been injured, you need to complete an accident report.
- No one was injured, but you think we should have “something” on record, complete an incident report.
- When in doubt, document it just to be on the safe side.

- Be as accurate as possible, but don't interpret events. Stick to facts and observations. Remember accident reports and incident reports are a part of the public record.
- Document the event as soon as the crisis is over, while information is still fresh in your memory. This means don't wait until after your three-day weekend to fill-out the form.

The purpose of documentation is to have a record of the event as soon as possible and to prevent your Library Manager or Administration being taken by surprise.

In addition to providing documentation about an incident, you should talk with your library manager if you believe that the incident was especially stressful or difficult for staff. Library managers can arrange for counseling or other help to assist staff in handling the aftermath of a particularly difficult or traumatic experience.

## **Disaster kit(s) are in place for staff, patrons and non-replaceable items in the collection**

**Disaster Kits are:** The sum total of all items or a collection of items specifically prepared and/or arranged prior to a disaster in order to mitigate the results of an incident or disaster. **Disaster Kits include items that may or may not be contained in one location or container within a facility.** For example, Fire Extinguishers are generally wall-mounted in a highly visible location, Flash Lights should be kept where they are readily found in the dark and Weather Radios need to be deployed to an area where they can be easily heard and monitored. Items particular to a certain Department or Branch should be kept together in a container as much as possible.

**Disaster Kits are located in:** Each HMCPL branch or Main Library Department as indicated

**Kits should contain:** A copy of the HMCPL Disaster Plan, A list of contact numbers and names of HMCPL employees who need to be informed of any library disaster, First Aid Supplies, Fire Extinguisher(s), Flashlight(s) Weather Radio(s), other branch or departmentally specific items as indicated or required by circumstances e.g. Archives Dept. may need white cotton gloves for handling certain fragile items, Bookmobile may need a small set of hand tools for minor on-road repairs, etc.

**PIC for Kits:** The Person In Charge who is responsible for maintaining the kit contents is the Branch Manager, Department Manager or their authorized delegate as applicable.

**Kits are inspected and evaluated:** Semi-Annually in January and June by PIC (Branch Manager or Department Manager as applicable) via visual inspection. Results are reported on the disaster kit inspection form.

# Disaster Kit Inspection Form

## HMCPL Disaster Kit Inspection Form

The following items are to be examined at least every six (6) months in January and June of each year for full operational readiness by the Person In Charge (PIC) or the PIC's authorized delegate.

Fire Extinguisher Charged & Inspected \_\_\_\_\_

First Aid Kit Complete & Inspected \_\_\_\_\_

Weather Radio Operational & Inspected \_\_\_\_\_

Flashlight Operational & Inspected \_\_\_\_\_

Disaster Plan & Contact Info. Present \_\_\_\_\_

Disaster Kit Items specific to your  
Location or department present and useable \_\_\_\_\_

Please give details below if any of the above items need to be replaced or changed.  
Forward this report to:

*Staff Training & Volunteer Coordinator*

**The following items were found unusable and require repair or replacement:**

---

---

---

**Signed:** \_\_\_\_\_ **Date:** \_\_\_\_\_

**Appendix: EE**

HMCPL Disaster Kit Inspection Form

## **Disaster Recovery Team (DRT)**

The Disaster Recovery Team (DRT) is a team on call to provide immediate response to collections disasters anywhere within the HMCPL system. The group has no formal charge, but team members are trained to clean, move and pack out damaged materials *where time is a critical factor*. Headed by the preservation librarian, the team provides leadership during collections disasters. Membership is assigned on the basis of job duties and past experience in emergency response. DRT meets once a year, and in the interim as needed for training and debriefing after a recovery event.

Disaster Recovery Team Members are listed on the internal-only document.

In the event of an emergency which involves damaged materials please contact any member of the Disaster Recovery Team immediately.

## **DURING THE DISASTER**

### **Response**

The response phase includes the mobilization of the necessary emergency services and first responders in the disaster area. This is likely to include a first wave of core emergency services, such as firefighters, police and ambulance crews.

## **Readiness and Emergency Management Procedures**



The purpose of this plan is to give staff, volunteers and patrons of the Huntsville Madison County Public Library information and instructions meant to assist them in the event of a variety of emergencies. As an occupant of one of our buildings, you need to be familiar with these procedures. Read them carefully. If you have any questions, consult the Staff Training & Volunteer Coordinator, your supervisor, or the Executive Director.

BOARD APPROVED: SEPTEMBER 2010

## **IMPORTANT PHONE NUMBERS**

- ALL LOCATIONS:
  - 911 should ALWAYS be your first call in an emergency. It is the universal number to get help sent quickly.
  - Person in Charge in Case of Emergency (Main) Cell number available on the internal-only document.

Bailey Cove Branch Library:

- Fire (non-emergency) 722-7120
- Police (non-emergency) 722-7100
- Ambulance (non-emergency) 722-7158

Bessie K. Russell Branch Library

- Fire (non-emergency) 722-7120
- Police (non-emergency) 722-7100
- Ambulance (non-emergency) 722-7158

Eleanor E. Murphy Branch Library

- Fire (non-emergency) 722-7120
- Police (non-emergency) 722-7100
- Ambulance (non-emergency) 722-7158

Elizabeth Carpenter Public Library of New Hope

- New Hope Rescue Squad (non-emergency) 256-723-4433
- Police (non-emergency) 256-723-8443
- County Volunteer Fire Departments (Non-emergency) 722-7171
- Huntsville-Madison County Rescue Squad (Non-emergency) 536-2720
- HEMSI (Madison County's ambulance service) Business number: 722-7150

Gurley Public Library

- Gurley Police (Non-emergency) 776-3313
- County Volunteer Fire Departments (Non-emergency) 722-7171
- Huntsville-Madison County Rescue Squad (Non-emergency) 536-2720
- HEMSI (Madison County's ambulance service) Business number: 722-7150

#### Madison Public Library

- Madison Police Department (Non-emergency) 722-7190
- Madison Fire & Rescue (Non-emergency) 772-7192

#### Main Library

- Person in Charge in Case of Emergency (MAIN) available on the internal-only document.
- Fire (non-emergency) 722-7120
- Police (non-emergency) 722-7100
- Ambulance (non-emergency) 722-7158

#### Monrovia Public Library

- Madison County Sheriff's Department (Non-emergency) 722-7181
- County Volunteer Fire Departments (Non-emergency) 722-7171
- Huntsville-Madison County Rescue Squad (Non-emergency) 536-2720
- HEMSI (Madison County's ambulance service) Business number: 722-7150

#### Oscar Mason Branch Library

- Fire (non-emergency) 722-7120
- Police (non-emergency) 722-7100
- Ambulance (non-emergency) 722-7158

#### Showers Center Library

- Fire (non-emergency) 722-7120
- Police (non-emergency) 722-7100
- Ambulance (non-emergency) 722-7158

#### Tillman D. Hill Public Library

- Madison County Sheriff's Department (Non-emergency) 722-7181
- County Volunteer Fire Departments (Non-emergency) 722-7171
- Huntsville-Madison County Rescue Squad (Non-emergency) 536-2720
- HEMSI (Madison County's ambulance service) Business number: 722-7150

#### Triana Public Library

- Madison County Sheriff's Department (Non-emergency) 722-7181
- County Volunteer Fire Departments (Non-emergency) 722-7171
- Huntsville-Madison County Rescue Squad (Non-emergency) 536-2720
- HEMSI (Madison County's ambulance service) Business number: 722-7150

# Emergency Codes



The following codes should be used by the Person in Charge in Case of Emergency and library staff to alert the rest of the employees in the building of certain situations:

- Code Red (Angry Patron/Dangerous Confrontation – Medical Emergency) 911 calls needed
- Code Yellow (missing child/abducted child)
- Code Green (chemical/hazardous substance spill)
- Code Grey (weather, tornado or severe thunderstorm warning)

In the Main library dial 5992 from any staff desk telephone to access the paging system.

An example might be "Code Red in Youth Services" meaning the Person in Charge in Case of Emergency should investigate immediately and be prepared to call 911.

## Calling 911 and the Person in Charge in Case of Emergency

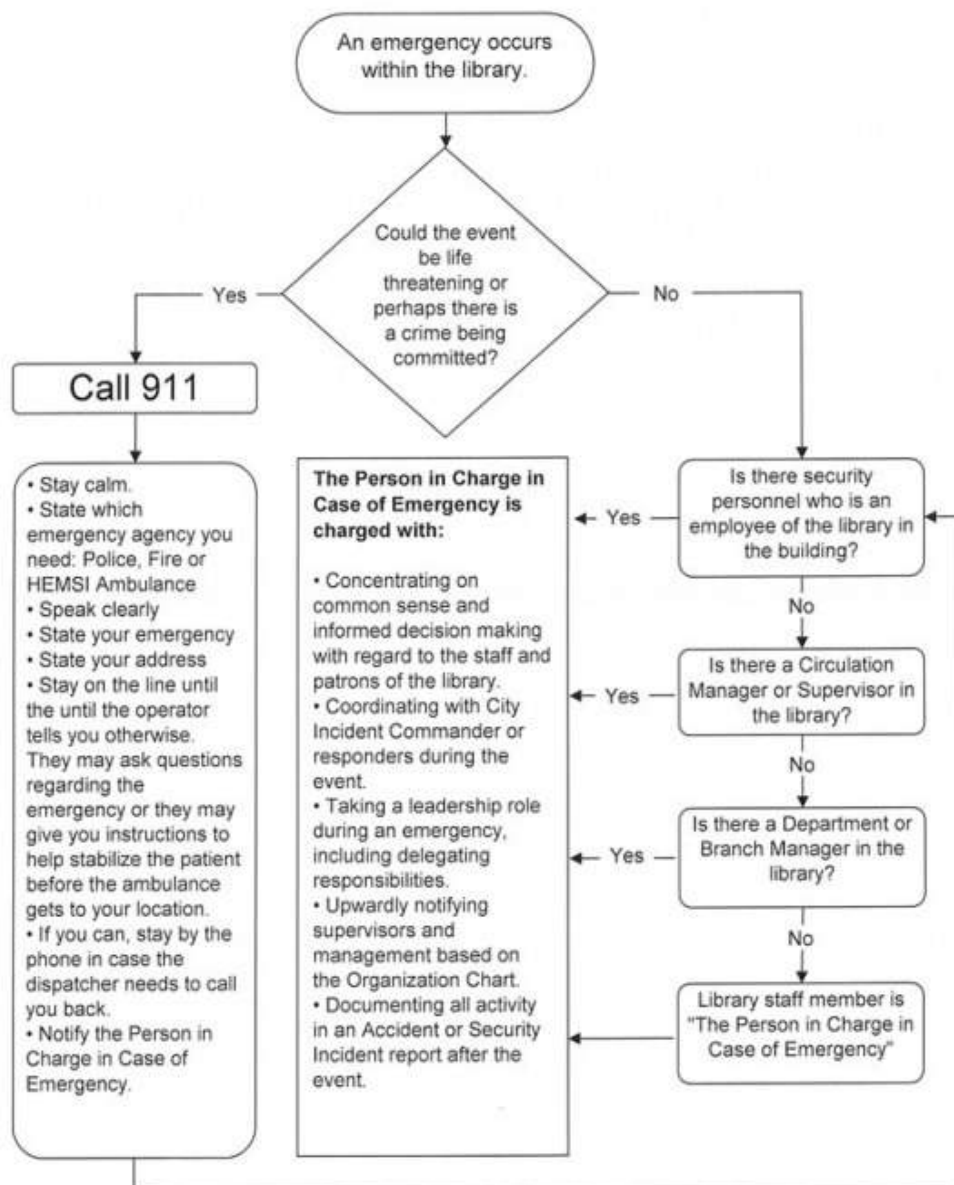
**Do not hesitate to call 911 if there could be a life threatening event or a crime being committed in the library!**

Rely on your intuition: if something 'feels' wrong, it probably is. Security or senior personnel will take charge if they are available.

The acting Person in Charge (PIC) in Case of Emergency at Main carries a library-issued cell phone. This number is available on the internal-only document. Handing off the PIC cell phone indicates a change of who is in charge during an emergency. The first PIC of the day will send an e-mail to all staff with the PIC schedule, though all staff should know that they can call the PIC cell number for assistance at any time.

All supervisors should also know which of their staff is in the building at any given time. Each staff member should have their supervisor's cell phone number memorized or stored. Cell phone numbers may be added to the StaffSpace Home Directory in the 'More about me' tab when editing a user profile.

The person designated for this responsibility depends upon location and time of day, and generally follows this organizational and communicative flow:



In order to ensure a safe library, the Persons in Charge in Case of Emergency are to follow certain guidelines which include the following instructions:

### **Daily Responsibilities or Tasks**

Upon reporting for work check the schedule to see if you are the Person in Charge of Emergency during your shift.

1. Consult the Person in Charge in Case of Emergency flowchart or the staff schedule to determine if you are to be held responsible for the position that day.
2. If your location has a PIC cell phone (hot potato!) make sure you wear the phone in your pocket or clipped to your belt. If you are required to leave the area *at any time* hand off the phone to the next PIC in line according to the chart. Be sure to regain control of the PIC cell phone when you return.
3. Make sure your name is written on the "Person in Charge" whiteboard in your area if you have one.

### **Weekly Responsibilities or Tasks**

The 'top-level' Person in Charge in Case of Emergency in each location should test or re-supply certain items *and then report via email to their supervisor and the Staff Training & Volunteer Coordinator the status of each:*

- First Aid Kit should remain well-stocked
- Weather Radio should remain plugged in and set to audible alarm
- Flashlights should have working batteries\*
- Portable radios should have working batteries\*
- Smoke and/or Carbon Monoxide detectors should have working batteries
- Hand sanitizers and cleansing wipes for staff and patrons

\* A person in each department should be designated to check the batteries weekly.

### **Appendices FF - JJ**

Emergency Flow Chart

Accident Report

Security Incident Report

Organizational Chart

Emergency Communications Tree

# Severe Weather

## DURING NORMAL OPERATION:

- The person in charge in case of emergency or his or her designee will inspect the S.A.M.E. equipped NOAA Weather Alert Radio each week to insure the radio is turned on, plugged in, tuned to our local station KIH-20,162.40 MHz, the alarm is set and functioning, backup battery is good, and the external antenna, if used, is plugged in. The Weather Service tests the alarm each Wednesday, if the weather is good, between 11:00 a.m. and Noon. **The person in charge in case of emergency will report via email to his or her supervisor and the Staff Training & Volunteer Coordinator the status of the weather radio each week.**

## DURING SEVERE WINTER WEATHER OR FLOOD EMERGENCY:

- The person in charge in case of emergency or his or her designee will monitor their locations' NOAA weather radio and local media which provides continuing coverage via broadcast or the internet. The weather alert radio is kept at the operator's desk in the Circulation workroom on the first floor.

## DURING A TORNADO WATCH OR THUNDERSTORM WARNING:

- The person in charge in case of emergency or his or her designee will monitor their locations' NOAA weather radio and local media which provides continuing coverage via broadcast or the internet. The weather alert radio is kept at the operator's desk in the Circulation workroom on the first floor.
- The person in charge in case of emergency or his or her designate will check the protective areas for personal items or potential hazards, unlock any door that is normally locked, and make sure the area is open, clear and ready for immediate use.

**There are no public tornado shelters in Madison County.** Upper management may choose to close and evacuate the library if a warning has been issued or if a tornado or damaging winds are spotted in an approaching storm and is at least 30-60 minutes away.

## DURING A TORNADO WARNING OR IF A TORNADO OR DAMAGING WINDS ARE SPOTTED:

- The person in charge in case of emergency or his or her designee will make an announcement over the public address system that a Tornado Warning is in effect for (our portion) of Madison County. "There has been a Tornado Warning issued (or tornado or damaging winds sighted); Please follow Library staff into protective areas in an orderly manner."

- The person in charge in case of emergency or his or her delegate will be responsible for evacuating staff and patrons and assist handicapped persons. Aim to have everyone take cover within 60 seconds.
- Some locations do not have protective areas. Upper management may choose to close these locations if given enough warning of an approaching storm so that staff and patrons may seek shelter elsewhere.
- If available, all staff and patrons must move to the designated protective areas via the closest Emergency Stairs. Disabled staff and patrons may use the elevator if necessary but must do so immediately after the warning has sounded.
- The Protective Area Plans should be posted in each location:
  - Bailey Cove Branch Library Protective Area is in the Circulation workroom.
  - Bessie K. Russell Branch Library Protective Area is in the restroom.
  - Eleanor E. Murphy Branch Library Protective Area is in the women's restroom.
  - Elizabeth Carpenter Public Library of New Hope Protective Area is in the New Hope City Hall
  - The Gurley Public Library has no protective area.
  - Madison Public Library Protective Areas are the Workroom and the Friend's Bookstore.
  - Main Library Protective Areas are as follows:
    - Youth Services into the Youth Services Workroom.
    - Remainder of First Floor into the AV Workroom.
    - Second Floor and Third Floor into the Circulation Workroom or Branch Run Room.
    - Overflow may use the restrooms on the first floor or the North hallway, away from the back doors.
  - The Monrovia Public Library has no protective area.
  - Oscar Mason Branch Library Protective Areas are the workroom and the hallway behind the stage.
  - Showers Center Library Protective Area is the men's locker room of the Showers Center Pool.
  - Tillman D. Hill Public Library Protective Area is the men's restroom.
  - The Triana Public Library has no protective area.
- Keep persons in protective areas if you have them. If patrons are wandering outside protective areas or are entering the library, inform them: “The Library is closed. You must remain in a protective area or depart the premises.” One staff member should be designated to remain in the protective area closest to the front doors to guide patrons to safety.
- Remain in a protective area until all clear is given by the person in charge in case of emergency or the designate.

In the event that severe weather occurs when the library is not open, the Library Director and his or her delegates will alert employees and media of closings or delayed openings via the Communications Tree. Public displays of the protective area plan and the evacuation



plan will be posted. During the annual Severe Weather Preparedness Week each February, we will participate in the Statewide Tornado Drill.

## Fire Alarm

For the safety of the staff and patrons in the library, all supervisors on duty should know the cell phone number for the Person in Charge in Case of Emergency. Supervisors should also know which of their staff is in the building at any given time and each staff member should have their supervisor's cell phone number memorized or stored. Cell phone numbers may be added to the StaffSpace Home Directory in the 'More about me' tab when editing a user profile.

**If there is no prior warning you must assume that the fire alarm is not being tested.**

- *Fire Alarm Test:* the alarm itself periodically needs to be tested by those in charge of the facilities. An announcement will be made on the public address system prior to the test and a call placed to the Person in Charge in Case of Emergency. Your job is to remain calm and inform confused patrons that it is only a test.
- *Fire Alarm Drill:* both the behavior of the people in the building and the mechanical aspects of the system are given a trial run to improve and identify problems with the emergency plan. In order to gauge the effectiveness of the plan Fire Alarm Drills may not necessarily be announced publicly.

**In the event you see flames in the library, only try to extinguish small, contained fires.** Use common sense; know extinguisher locations on the Floor Plans and how to use them. Contain the fire in one area by shutting doors and turning off fans.

- If the fire is *not* small or contained, engage a Fire Pull if the smoke detectors do not automatically activate the alarm system. The alarm system will automatically call the fire department.

**In the event you smell or see smoke in the library and are unable to identify the source, activate the fire alarm by engaging a Fire Pull.** See the Evacuation Routes for the locations of Fire Pulls in your location.

**If the alarm is inoperative, dial 911 to report the fire, then call the Person in Charge in Case of Emergency.** The PIC will then make an announcement over the intercom to evacuate. See the Evacuation Routes for your location.

**Concerning the fire alarm (Systems Technology) panel at Main:** if the alarm is activated the only persons authorized to disable or silence the alarm are the fire department or Systems Technology. If we have a situation when we know it's a false alarm call Systems Technology at 256-518-9000.

**All staff and patrons must evacuate the building when the fire alarm sounds if there has not been advance warning that the system is being tested.** Evacuate as quickly as possible according to the Evacuation Route or, if the route is blocked, the nearest exit away from the fire. Floor supervisors are responsible for evacuating staff and patrons (including assisting handicapped persons) to fire stairwells and designated outside meeting place for a headcount. Once the headcount is taken, floor supervisors should contact the PIC cell phone with information regarding the evacuation and whereabouts of staff and patrons. The person in charge in case of emergency will be responsible for coordinating with the Incident Commander for the Fire Department: Immediately direct the firefighters to any persons who may be trapped in the building, the fire location or to the location of hydrants, wall hoses in fire stairwell, or activated alarm pull.

- Grab keys, purses and backpacks if they are nearby.
- Close the doors on the way out.
- If there is heavy smoke, evacuate the building by crawling with your nose to the floor.

**When the fire alarm sounds, the fire doors leading into the stairwells will close automatically, creating a safe environment or shelter-in-place.** In the event a disabled person (even temporarily) is in the building, supervisors should direct them into the stairwell landing, opposite the fire if possible, and wait for fire safety personnel to arrive.

**Supervisors will check restrooms and other areas on their floors to see that every one has evacuated, or if disabled, has sheltered-in-place.** Use a cell phone to contact the Person in Charge in Case of Emergency and inform them who remains in the building and where they are located.

**After evacuation staff and patrons should gather outside in the designated meeting places for a headcount:**

- **FIRST FLOOR:** In the middle of the front parking lot, away from the front entrance. Avoid fire lanes.
- **SECOND FLOOR:** In the back parking lot, closest to the Scruggs Center.
- **THIRD FLOOR:** In the back parking lot, closest to Davis Circle.
- **BAILEY COVE, ELEANOR MURPHY, BESSIE K. RUSSELL, MADISON, GURLEY, SHOWERS, OSCAR MASON, HAZEL GREEN, TRIANA and MONROVIA:** In the front parking lot, but avoiding fire lanes.
- **NEW HOPE:** Gazebo in East parking lot.

**Do not re-enter or walk around the building if you were forced to exit away from your designated meeting space.** Contact your supervisor by cell phone to let them know you are safe.

**Supervisors should contact the Person in Charge in Case of Emergency by cell phone when your group is in the designated meeting space and the possible location of people**

**who are not accounted for.** Once the firefighters arrive, the Person in Charge in Case of Emergency should coordinate with the Incident Commander and direct the firefighters to the location of the fire, any persons who may be trapped in the building, locations of all stairwells, the location of hydrants, wall hoses in fire stairwell, or activated alarm pull.

**Only re-enter the building when given an all-clear by the Incident commander or the Person in Charge in Case of Emergency.**

[SEE EVACUATION PLAN FOR ROUTES AND EXITS.]

## Hazardous Materials

A hazardous materials incident may be a spill or release of chemicals, radioactive materials or biological materials inside a building or to the environment. The staff may manage simple spills. Major spills or emergencies require emergency assistance from 24-hour emergency agencies, i.e. the city Fire Department.

Simple Spill	Major Spill or Emergency
Does not spread rapidly.	Spreads rapidly.
Does not endanger people.	Endangers people.
Does not endanger environment.	Endangers environment.
Staff can clean up.	Must call 911. Evacuate, assemble at a safe distance – upwind. Account for individuals. Wait for and provide information to responders.

### Cleaning Simple Spillage Involving Human Materials:

- Staff handling the cleanup must cover any personal cuts on hands, arms etc. with bandages before cleaning spills of blood and other body fluids.
- Spills should be cleaned using a solution of 1 part bleach, 9 parts water. Do not use bare hands to clean up soiled areas or items; always wear leak-proof gloves.
- Soiled area should be thoroughly mopped and disinfected.
- After use, disinfect mops, buckets and other cleaning equipment with fresh bleach solution.
- Place gloves and cleaning cloth or towels in plastic garbage bag and place in waste bin.
- Always wash hands with soap and hot water for at least 20 seconds after removing gloves.

- Flush eyes, nose, or mouth with water if exposed to another person's blood or body fluid.

### Incidents Involving Syringes

- Notify Person in Charge in Case of Emergency if a syringe is found inside a library building or on the grounds.
- Person in Charge should contact the Madison County Health Department for safe disposal of a syringe.
- Normally a syringe is placed in a suitable sharps container, i.e., a solid sealable metal box or other rigid container that won't puncture garbage bags, to prevent those handling garbage from pricking themselves.
- Disposable rubber gloves must be worn to pick up syringe and place it into the container.
- Gloves should be removed inside out, placed in a plastic garbage bag, and disposed in waste bin.
- Hands must be thoroughly washed with a disinfectant soap.

## Shelter in Place

One of the instructions we may be given in an emergency where hazardous materials may have been released into the atmosphere is to shelter-in-place. This is a precaution aimed to keep staff and patrons safe while remaining indoors. (This is not the same thing as going to a shelter in case of a storm.) Shelter-in-place means selecting a small, interior room, with no or few windows, and taking refuge there.

We might be asked to shelter-in-place in case of chemical, biological, or radiological contaminants that may be released accidentally or intentionally into the environment. Should this occur, information will be provided by local authorities on television and radio stations on how to protect us. Because information will most likely be provided on television and radio, it is important to keep a TV or radio on, even during the workday.

If instructed to shelter-in-place the Person in Charge (PIC) in Case of Emergency in the library will take the following actions:

- Shut and lock all exterior doors.
- If there are patrons in the building, we will provide for their safety by asking them to stay – not leave. When authorities provide directions to shelter-in-place, they want everyone to take those steps now, where they are, and not drive or walk outdoors.
- We will use the protective areas established for severe weather to shelter-in-place.
- Unless there is an imminent threat, the PIC asks employees and patrons to call their emergency contact to let them know where they are and that they are safe.

- Turn on call-forwarding or alternative telephone answering systems or services. Voice-mail messages should be changed to indicate that the library is closed, and that staff and patrons are remaining in the building until authorities advise it is safe to leave.
- Close and lock all windows, exterior doors, and any other openings to the outside.
- If we are told there is danger of explosion, we are to close the window shades, blinds, or curtains.
- Turn off all fans, heating and air conditioning systems. Some systems automatically provide for exchange of inside air with outside air – these systems, in particular, need to be turned off, sealed, or disabled.
- Gather essential disaster supplies, such as nonperishable food, bottled water, battery-powered radios, first aid supplies, flashlights, batteries, duct tape, plastic sheeting, and plastic garbage bags.
- Use duct tape and plastic sheeting (heavier than food wrap) to seal all cracks around the door(s) and any vents into the room.
- Write down the names of everyone in the room, and call the person in charge in case of emergency to report who is in the room with you.
- Keep listening to the radio or television until you are told all is safe or you are told to evacuate. Local officials may call for evacuation in specific areas at greatest risk in your community.

## Medical Emergency

The Code of Alabama (Section 6-5-332) restricts protection to trained rescuers or employees of the public education system, unless the victim is suffering cardiac arrest. Alabama's "Good Samaritan Law" applies only to doctors, nurses, policemen, firemen, EMT, volunteer firemen, or those assisting persons having a heart attack. The law **DOES NOT INCLUDE CITIZENS NOT TRAINED** by programs approved by the American Medical Association. You must have updated training with AMA or be certified by the State of Alabama before rendering first aid or emergency care; you may be held liable for civil damages as a result of your actions. You must prove you have training and/or certification.

### FOR LIBRARY STAFF:

- **CHECK** the scene, then check the person. Make sure that it is safe for you to approach.
- **CALL** 911 if the victim is unresponsive, unconscious, is not breathing or is having trouble breathing; is choking or has persistent chest pain; has severe bleeding, burns, is in shock or is having seizures; or shows no signs of life.
  - Have another staff member call the Person in Charge in Case of Emergency.
- **CARE** with consent. The victim must give consent, or implied consent, before you can administer first aid. If the person is a minor (younger than 18) ask permission to aid from the parent or guardian. If parent is unavailable the law presumes that the

parent would want the child cared for in an emergency. This is implied consent. If the victim is unconscious, mentally ill, mentally challenged, emotionally disturbed, or cannot think clearly due to the illness or injury, consent is also implied.

- Move the victim only if his or her life is endangered.
- Attempt to obtain the following information from the ill or injured person or the victim's friend, relative or guardian:
  - Name, if not known
  - Description of symptoms
  - Allergies
  - Medications, Major medical history (heart condition, asthma, diabetes, etc.)
- Continue to provide care until a trained person arrives, or have the victim's friend, relative, guardian provide most, if not all, first aid.
- Keep victim calm and comfortable.
- Do not give medical advice. Remain at the scene after emergency personnel have arrived to provide information.
- The Person in Charge (PIC) in Case of Emergency will complete an Accident Report including name, address, age, how accident occurred, nature of injury, location, family members present, names of witnesses, and procedures followed.

#### FOR TRAINED LIBRARY RESPONDERS ONLY:

- CHECK, CALL and CARE in accordance with First Aid / CPR / AED for the Workplace, American Red Cross (2006) ISBN 1-58480-341-X
- AED Units are located at Main and Madison Library near the Circulation Desk.

## Power Outage

#### DURING A BLACKOUT:

- Remain calm.
- Get the flashlight which is kept in your area.
- If you are in an unlighted area, proceed cautiously to an area that has emergency lights.
- If you are in an elevator use the emergency button to call for help or use a cell phone to alert the Person in Charge (PIC) in Case of Emergency.
- The PIC or his or her designate should
  - Assist persons as needed, especially those with physical handicaps or who may be unfamiliar with the space.
  - Check the stairwells.
  - Check the restrooms.
  - Check the elevators for trapped persons. Only specially trained personnel, a representative of the elevator company or a Fireman may rescue a person trapped in an elevator.

- Await further instructions.

## Workplace Violence

- Always remain calm and use common sense.
- Remain alert for situations that may become dangerous or life-threatening.
- Trust your instincts.
- Do not hesitate to call 911.
- Immediately report calls from local police or emergency management personnel to the Person in Charge (PIC) in Case of Emergency.
- In general, put as many barriers between you and the danger as possible, but do not use elevators in an unknown situation.
- The PIC, or his or her designates (usually the floor supervisors), will be responsible for evacuating staff and patrons and assisting handicapped persons.

### ANGRY INDIVIDUALS / DISORDERLY INDIVIDUALS:

- Use the 'safety in numbers' approach when dealing with angry individuals.
- Using non-threatening language, talk calmly to the person, explaining that we can not help unless they behave rationally and within the “Behavior within the Library” policies.
- Call security or the person in charge in case of emergency via paging system or phone to alert them of the situation.

### IF VIOLENCE OCCURS IN THE BUILDING OR THERE IS AN IMMEDIATE THREAT OF VIOLENCE:

- Leave the area immediately if possible. If this is not possible, try to lock yourself in a secure area.
- Call 911 or Security or the Person in Charge (PIC) in Case of Emergency with as many details as possible.
- Immediately lock doors as possible and appropriate to isolate the disturbance.
- Take steps to protect your own safety and the safety of others.
- Encourage people to leave the area.

### HOSTAGE OR ROBBERY SITUATION:

- Dial 911 and if possible, the Person in Charge (PIC) in Case of Emergency. Provide as many details as possible including number of persons involved, description of perpetrators, weapons displayed, threats made, etc.
- Do what you are told without argument. Do not attempt to negotiate or argue with the perpetrator. Try to get others to remain calm. Tell others to do what they are told.

### OUTSIDE THE LIBRARY:

- Walk in pairs at night in parking lots or when banking. At Main, call the the Person in Charge (PIC) in Case of Emergency.
- Communicate outside danger by calling 911 on a cell phone, yelling, car panic button, or any other means possible.
- Have a personal safety plan on how you will react if attacked. Some suggestions are fake a heart attack, throw your keys, spray mace, or run. This is a personal decision based on what you are capable of doing in a given situation.

[SEE PROTECTIVE AREA AND EVACUATION PLANS FOR ROUTES AND EXITS.]

## **Bomb Threat**

**AS SOON AS YOU HANG UP FROM A BOMB THREAT NOTIFY THE PERSON IN CHARGE IN CASE OF EMERGENCY!**

- Remain calm and deal with the caller. Remember that the bomb threat caller wants to create turmoil and panic!
- Observe telephone number on Caller I.D. box (if available).
- Evaluate the threat by acquiring information.
- Ask questions in a soothing voice and be conversational:
  - Why did you do that?
  - What does the bomb look like?
  - Is it a dynamite bomb?
  - How is it triggered?
  - Where is it?
  - When is it set to go off?
- Keep the caller on the phone and talking:
  - Don't ask "Who is this?" or "Where are you?"
- Write down information as you listen:
  - Describe the caller's voice.
  - Is there an accent?
  - What tone of voice did the caller use?
  - Is this a familiar voice?
  - Are there background noises?
  - Is the caller male or female?
  - Is the caller young or old?
- Immediately report your evaluation to security or the person in charge in case of emergency.

**YOUR EVALUATION WILL HELP DECIDE IF CALLING 911 AND EVACUATION IS NECESSARY.**



- Example of false alarm: 5 year old making call, a drunken person talking incoherently, teenager with laughing in the background.
- Example of true alarm: male speaks in muffled voice saying he put a pipe bomb in your library and people are going to die.

IF THE DECISION IS MADE TO PULL THE FIRE LEVER IN ORDER TO IMMEDIATELY EVACUATE THE BUILDING.

- Remain Calm; calmness is contagious.
- Security or the person in charge in case of emergency will give instructions in an unexcited manner and be responsible for evacuating staff and patrons (including assisting handicapped persons) to the stairwells and designated outside meeting place for a headcount.
  - MAIN LIBRARY
    - FIRST FLOOR: In the middle of the front parking lot, away from the front entrance. Avoid fire lanes.
    - SECOND FLOOR: In the back parking lot, closest to the Scruggs Center.
    - THIRD FLOOR: In the back parking lot, closest to Davis Circle.
  - BAILEY COVE, ELEANOR MURPHY, BESSIE K. RUSSELL, MADISON, GURLEY, SHOWERS, OSCAR MASON, HAZEL GREEN, TRIANA and MONROVIA: In the front parking lot, but avoiding fire lanes.
  - NEW HOPE: Gazebo in East parking lot.
- Elevators will automatically go to first floor; doors open, and remain inoperable.

MOVE OUTSIDE THE BUILDING TO DESIGNATED MEETING SPACES.

- Observe crowd. Look for suspicious persons; possible bomber watching, hand-held trigger device. Notify police.
- Re-enter building only after clearance is given by police.

[SEE EVACUATION PLANS FOR ROUTES AND EXITS.]

## **Pandemic Outbreak**

Board Approved: 4/16/09

In the event of a Pandemic influenza outbreak the library will play a key role in protecting employees' health and safety as well as limiting the negative impact to the community. Education of the staff in advance of an epidemic will be a priority. During a viral outbreak the library will align with recommendations from The World Health Organization, The United States Federal Government, The Centers for Disease Control, The State of Alabama Department of Public Health and, ultimately, the Emergency Management Agency of Madison County.

The Staff Training and Development Coordinator will serve as the Pandemic Coordinator during an outbreak and will be available to advise the Library Director on our best response to phases developed in August 2009 for the NN/LM Emergency Preparedness & Response Toolkit

**Pandemic Planning  
Stages of Pandemic and Library Procedures**

Period	Level	Description	Procedures
Pre-pandemic	1	New influenza virus detected, no vaccination available, begins to spread among humans in a limited area.	Monitor information sources about the situation (CDC, institution), no changes to operations.
Pandemic alert	2	The virus poses a substantial risk of transmission, and spreads rapidly beyond the locality of origin. The public is informed that a new virus is successfully spreading.	Continue to monitor information sources, no changes to operations.
	3	The virus spreads globally, is transmitted quickly among humans, and creates widespread infection.	Develop/review pandemic plans and schedule a table-top exercise involving relevant personnel for dealing with the potential effects of the new virus (staff absences, limited hours of operation, closure due to social distancing measures). Update procedures as necessary. If feasible, enable connectivity for designated staff to online library resources from their homes. Create a prioritized list of supplies and order additional essential supplies, anticipating possible interruptions of service from vendors.
Pandemic	4	The WHO declares the virus to be a global pandemic.	Managers meet to discuss strategies for: <ol style="list-style-type: none"> <li>1. slowing the spread of the virus, and</li> <li>2. dealing with a significant rate of staff absences</li> </ol> Based on existing variables, managers decide whether, when and how changes to operations will be made as the situation evolves. Measures intended to slow the spread of the virus may include reduction of hours of operation, closure of service desks, and removal of shared equipment in public areas. Anticipating staffing shortages, managers ascertain institutional and organizational personnel and staffing policies and procedures in order to continue to offer limited library services (e.g. time and leave requirements for faculty and staff to work from home, designating essential personnel, circumstances for which leave requests may or may not be approved.) Establish a deep chain-of-command so that if key library managers are ill and unable to perform their duties a structure for decision-making and communication can be maintained. Order any essential supplies that may be needed to fill possible shortfalls from vendors.
	5	Virus becomes prevalent in the local community and authorities invoke measures in order to slow the spread of the virus. Operations may be affected by a significant rate of staff absenteeism.	Library managers comply with all directives from the institution about changes to operations resulting from the pandemic, adjusting operations and staffing patterns as the situation evolves. Measures to prevent spread of the virus may be enacted (see Level 4). Based on available staff, managers make decisions about who will work from home and during what hours, in order to provide limited patron services from off-site. Notify patrons of changes to library hours and availability of limited services from off-site. Edit the library's web page to show the status of operations and the services and resources available.

The Pandemic Coordinator will also:

- Monitor issues and information related to pandemics to keep our plan up to date.
- Recommend any changes to the plan as circumstances warrant.
- Train staff and encourage the use of proper-hand washing and distancing techniques.
- Help prepare for high-absenteeism by encouraging cross-training.
- Communicate with public health agencies, emergency responders and others regarding our plan, and understand their capabilities should an outbreak occur.
- Attend external training/seminars about pandemic influenza outbreaks in order to remain current about the pandemic threat in our community.

# Latest News on the Pandemic Flu for HMCPL

The Pandemic Coordinator will stay up to date on Pandemic news in order to better estimate the effects of a crisis for the library and to make recommendations to the Library Director. Library staff and management will also need current information on the evolving situation for patrons.

To further this effort, a live feed of current news articles concerning the H1N1 outbreak are shown on the online version of this plan

Sources:

- World Health Organization Influenza Page
- United States Government Flu Information
- Centers for Disease Control H1N1 Flu
- State of Alabama Department of Public Health H1N1 Flu Home
- EMA of Madison County Flu Information
- Local Google News Search: Flu

## Protecting your health

Seasonal Influenza vaccinations will be made available through local means to library staff. Regardless of whether staff chooses to receive a flu shot, all staff should follow these simple guidelines every day and especially during a Pandemic:

- Cover your nose and mouth with a tissue when you cough or sneeze. Throw the tissue in the trash after you use it.
- Wash your hands often with soap and water, especially after you cough or sneeze. Alcohol-based hand cleaners\* are also effective and are made available to both staff and public.
- Avoid touching your eyes, nose or mouth. Germs spread this way.
- Try to avoid close contact with sick people. Guidelines determine that the appropriate space to diminish human-to-human transmission of any virus is six feet.
- If you are sick with flu-like illness, CDC recommends that you stay home for at least 24 hours after your fever is gone except to get medical care or for other necessities.

During a local outbreak alcohol-based hand and computer-peripheral cleaners will be made available to the public. Signage will be made available as follows:

fluplacard.doc:

The Library is concerned for your health.

To avoid viral contamination, please take an alcohol-based wipe and clean your keyboard and mouse prior to using a public computer.

flusign.doc:

The Library is concerned for your health.

In response to current or potential viral influenza outbreaks, the Library will follow guidelines provided by the Centers for Disease Control, The Alabama Department of Public Health and the Emergency Management Agency of Madison County.

There are alcohol-based hand and computer-peripheral cleaners available to the public.

The Alabama Department of Public Health recommends that if you become ill with influenza-like symptoms, including fever, body aches, runny or stuffy nose, sore throat, nausea, or vomiting or diarrhea, you should stay home and avoid contact with other people.

#### **Appendices KK - LL**

Flu Placard

Flu Sign

## **Prepare for Absences or Closures**

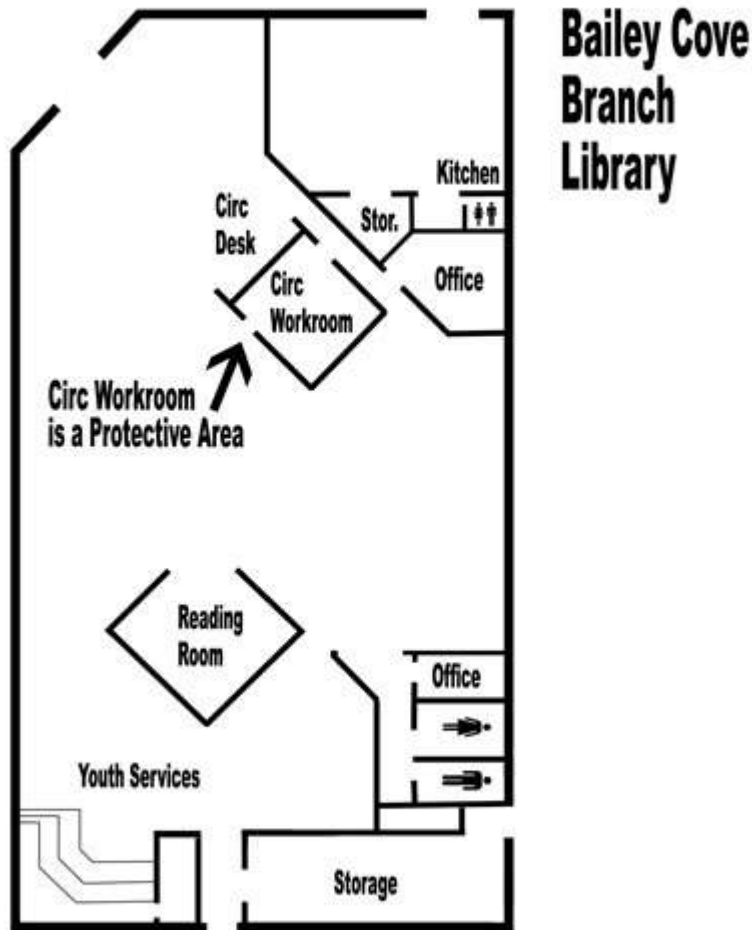
- All staff should clearly understand our Sick Leave and Family and Medical Leave Policy, especially during a Pandemic Outbreak. Taking care of ill family members or yourself is a top priority for the library.
- Staff will be cross-trained in basic circulation procedures in the event that high absences require staff shifting.
- Staff should make sure their listings in the Home Directory are updated so that the Emergency Communication Tree remains effective in the event that the Emergency Management Agency of Huntsville and Madison County (or other government entity) closes the library.
- Public programming may be interrupted should there be an immediate health concern for patrons and staff or if employee absences prevent proper staffing.
- The Deputy and Associate Directors will be responsible for setting a schedule for seeing to the critical needs of the facility if the library is closed for an extended time. These critical needs include, but are not limited to:
  - electronic services

- boiler and building checks
- book drop
- payroll
- other banking considerations

# Protective Area Plans

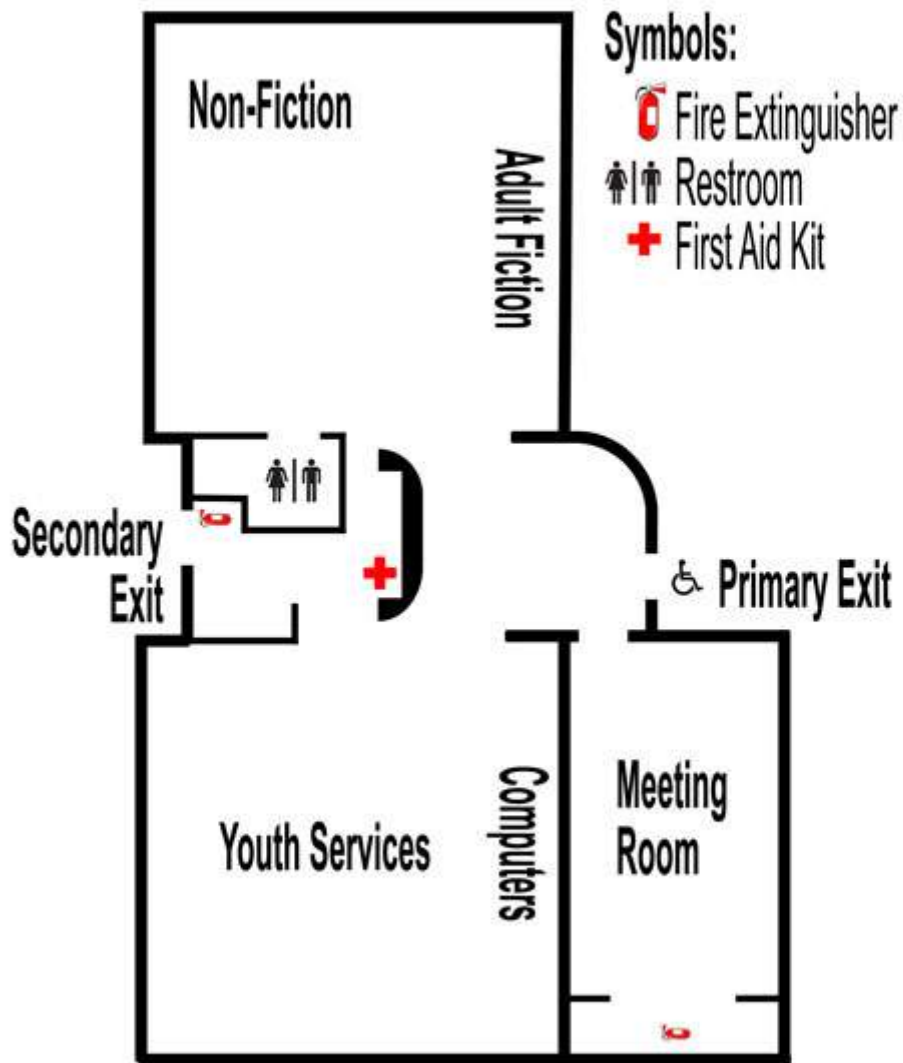
Each location will have protective areas where staff and patrons will gather in the event of certain emergencies:

## Bailey Cove Branch Library Protective Area Plan



# Bessie K. Russell Branch Library Protective Area Plan

## Bessie K. Russell Branch Library

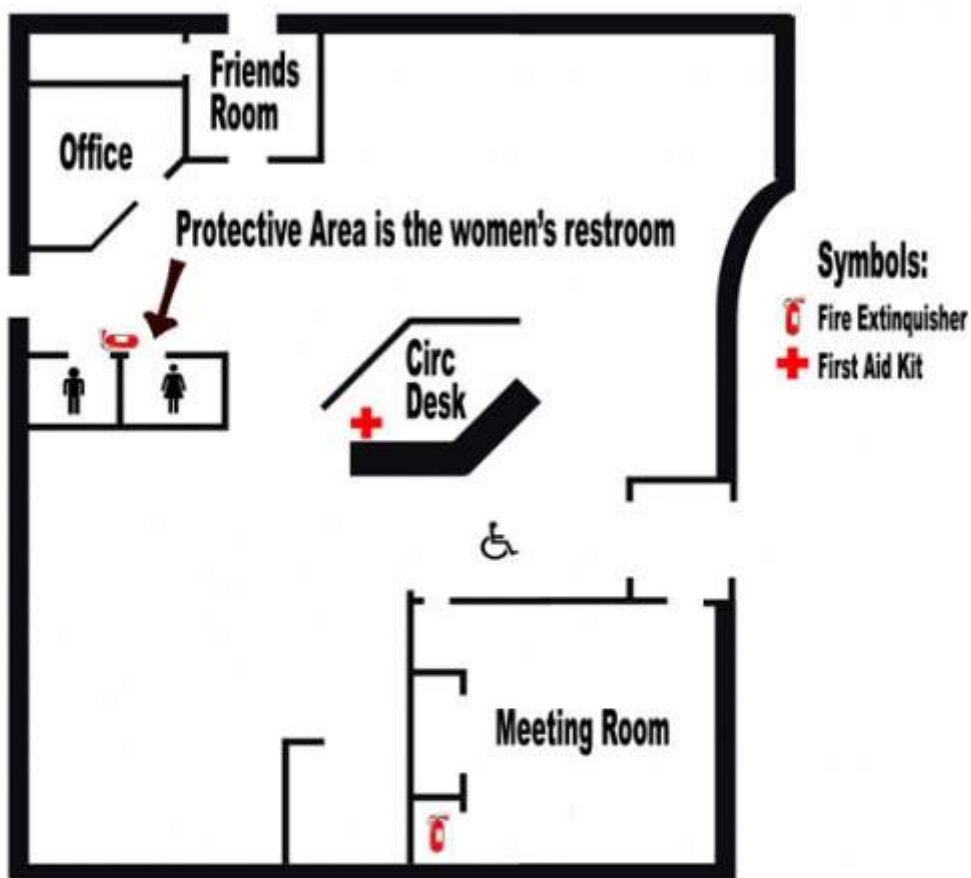


**No Protective Areas**

There are no protective areas in this library. Please evacuate during a tornado warning.

# Eleanor E. Murphy Branch Library Protective Area Plan

## Eleanor E. Murphy Branch Library



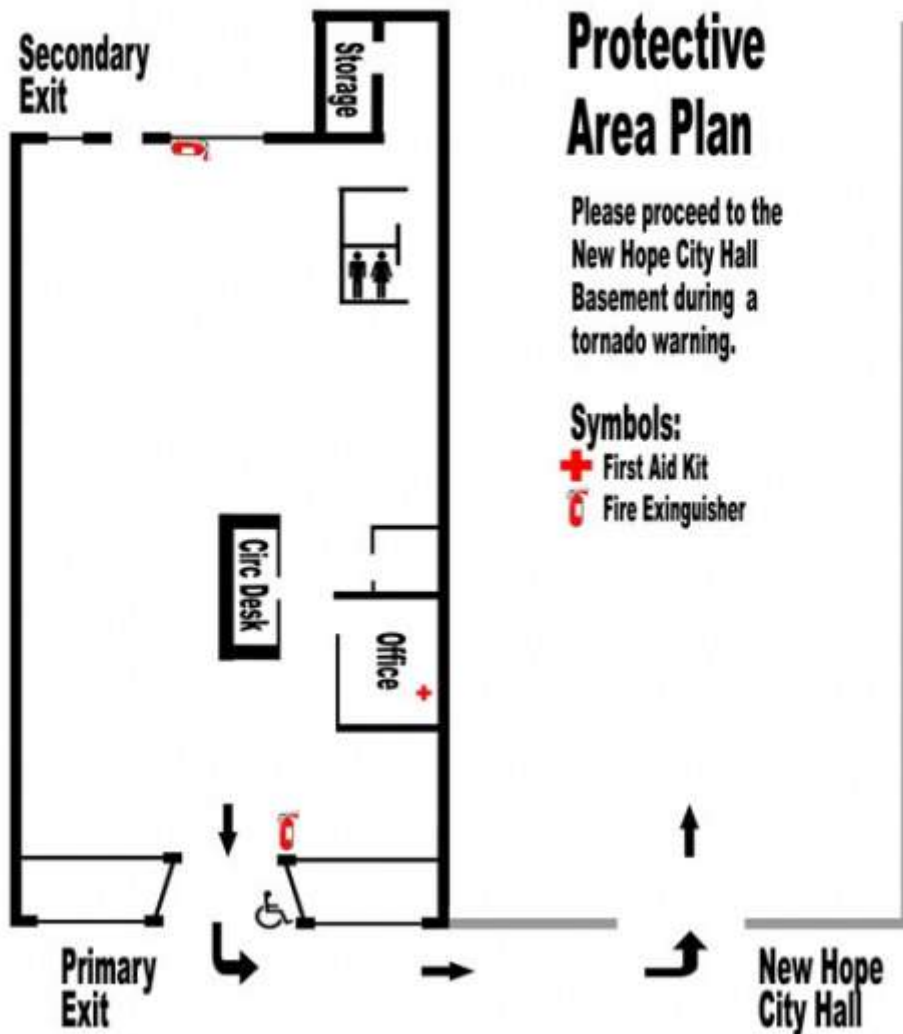
## Protective Area Plan

In case of tornado warning please proceed to an interior, closed room .



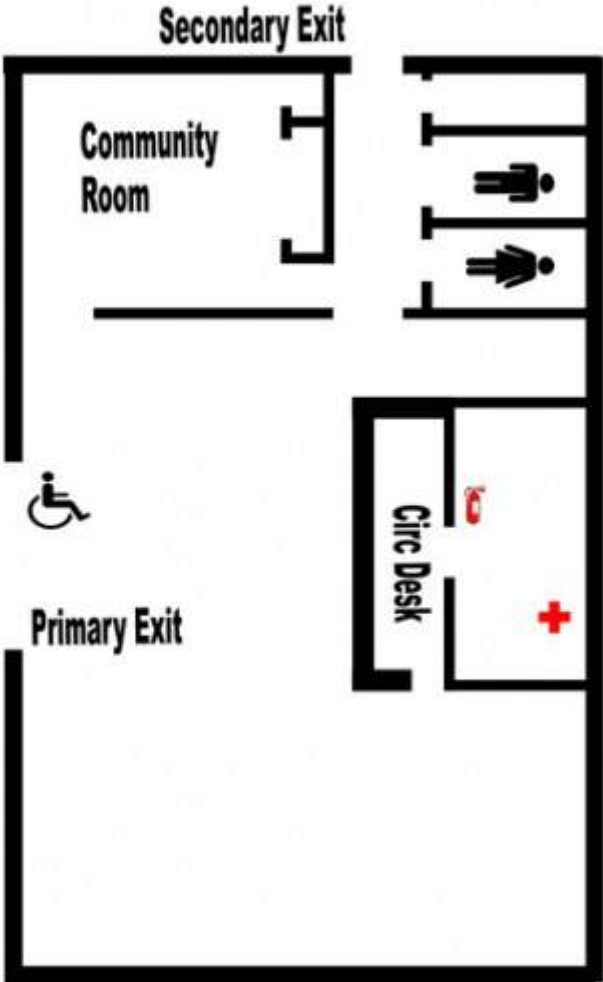
# Elizabeth Carpenter Public Library of New Hope Protective Area Plan

## Elizabeth Carpenter Public Library of New Hope



# Gurley Public Library Protective Area Plan

## Gurley Public Library



### Symbols:

- Fire Extinguisher
- First Aid Kit

There are no protective areas in this library. Please evacuate during a tornado warning.

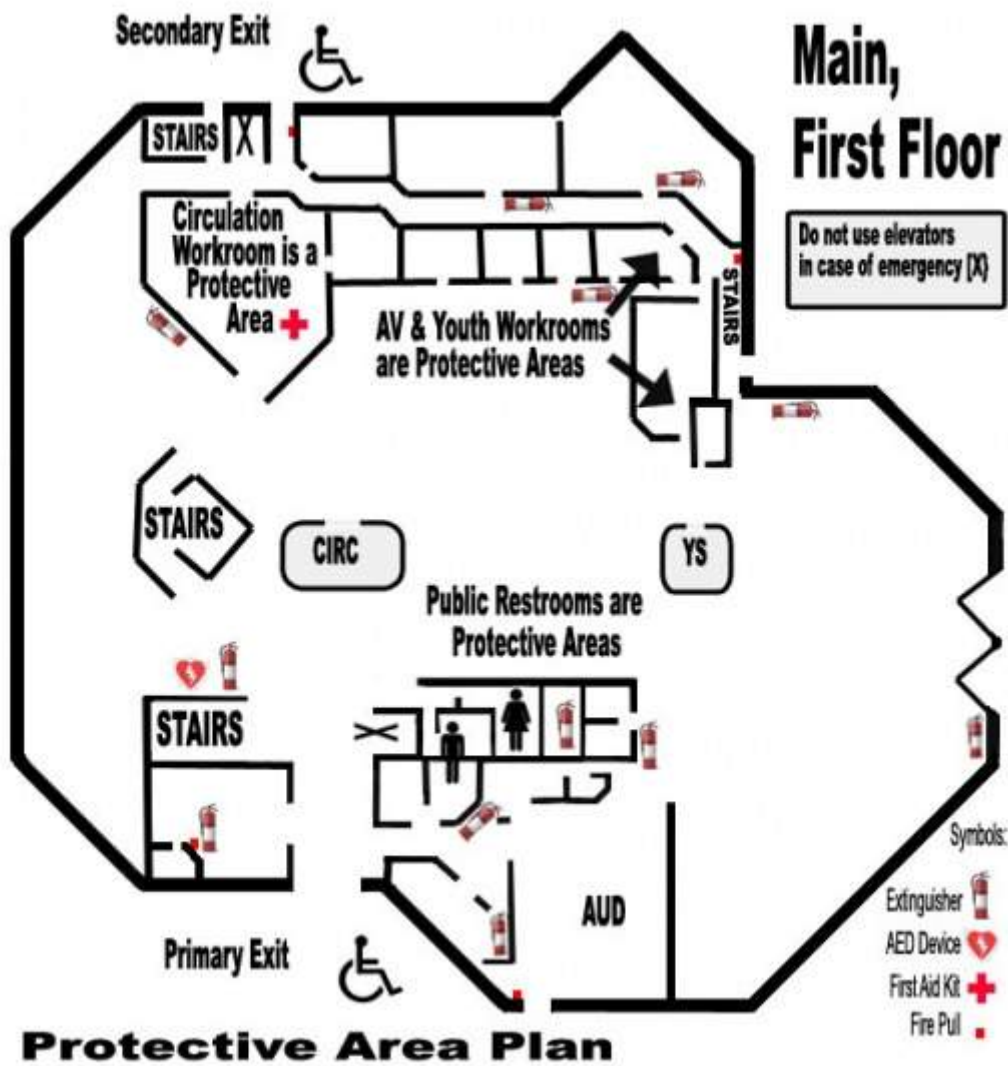
## Protective Area Plan

# Madison Public Library Protective Area Plan

## Madison Public Library

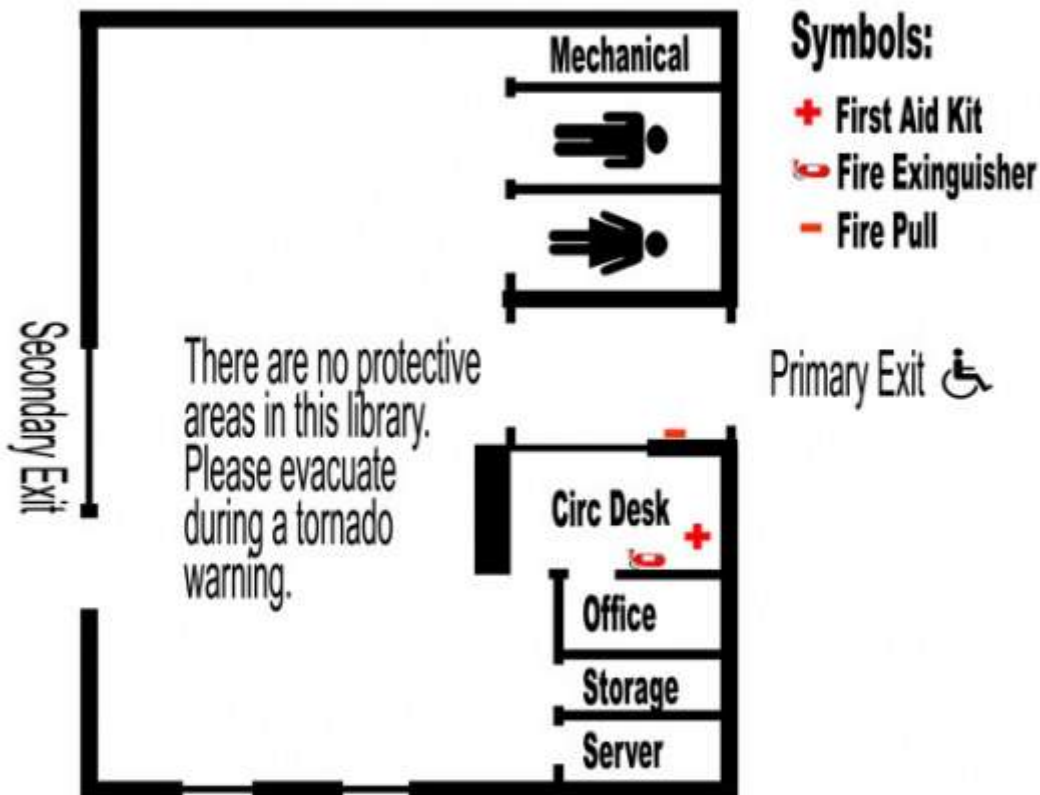


# Main Library Protective Area Plan



# Monrovia Public Library Protective Area Plan

## Monrovia Public Library

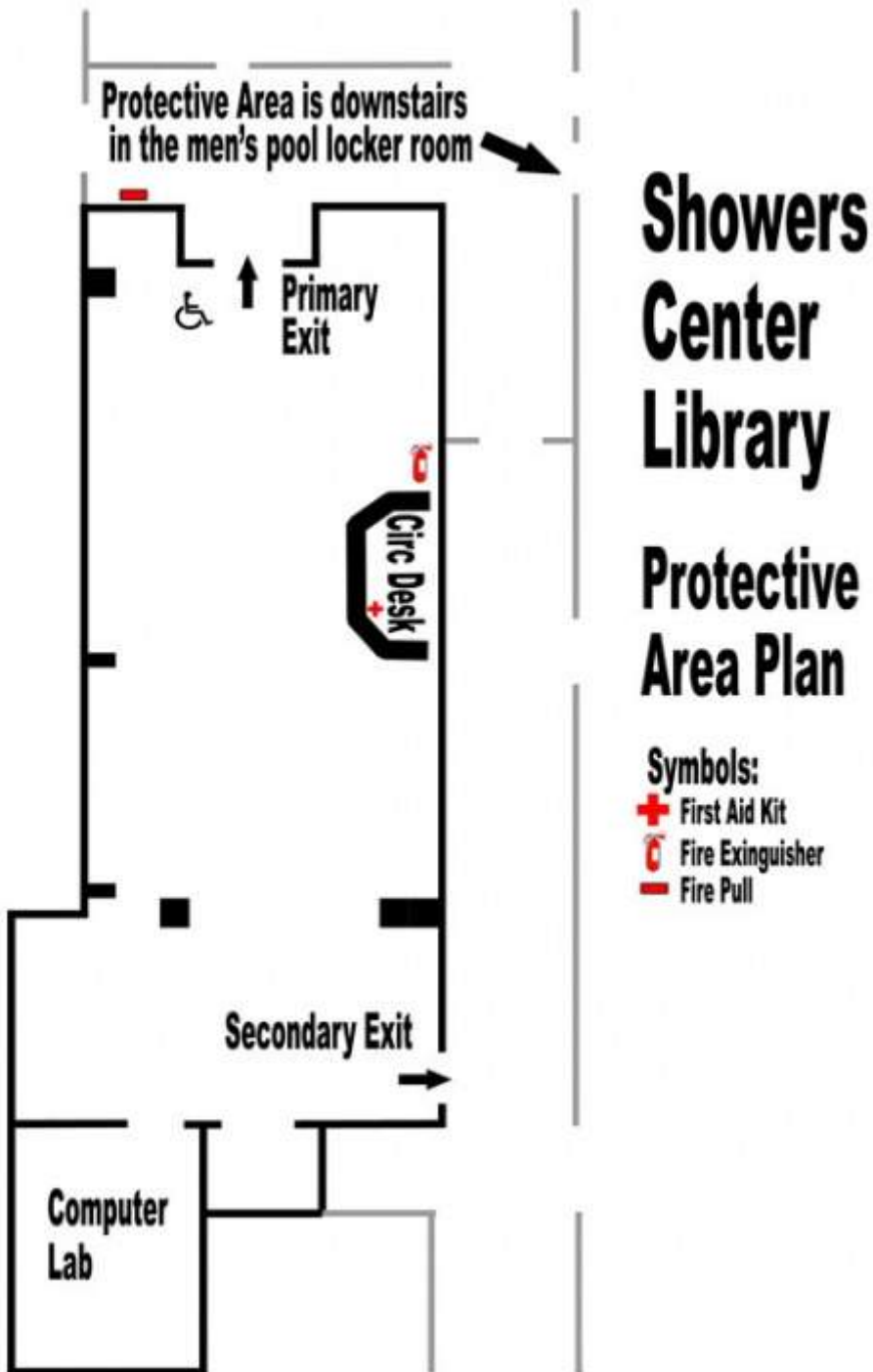


## Protective Area Plan

# Oscar Mason Branch Library Protective Area Plan

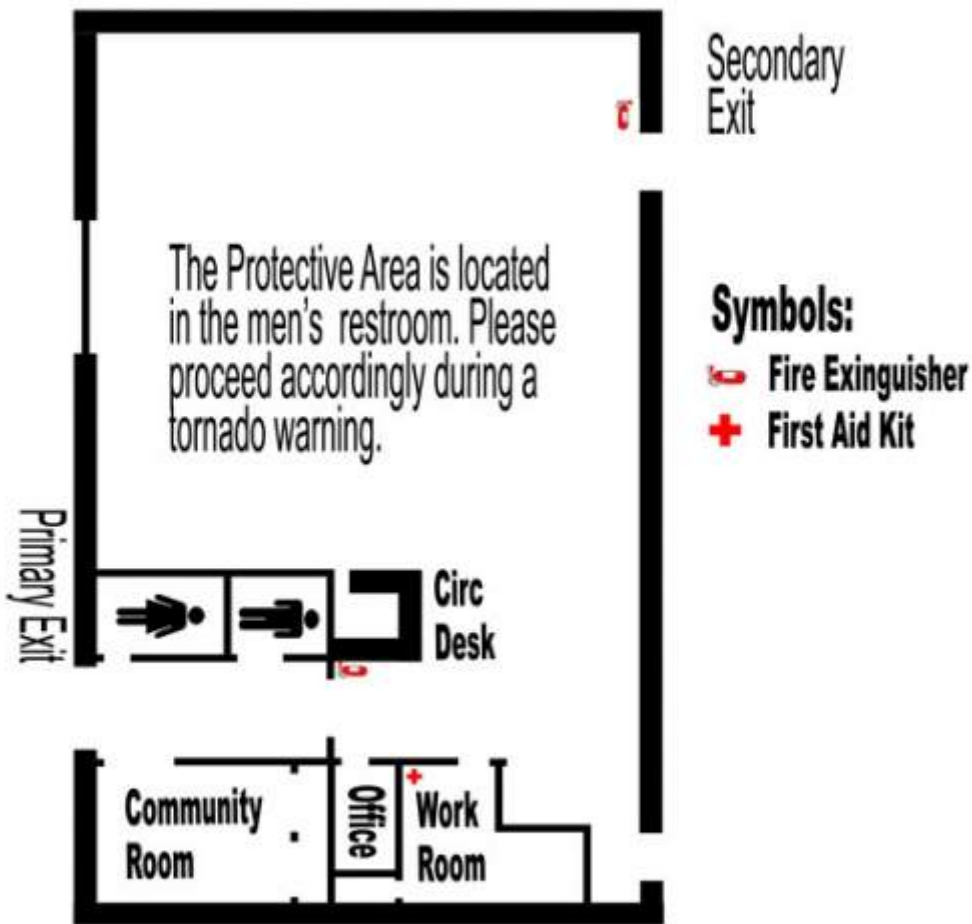


# Showers Center Library Protective Area Plan



# Tillman D. Hill Public Library Protective Area Plan

## Tillman D. Hill Public Library

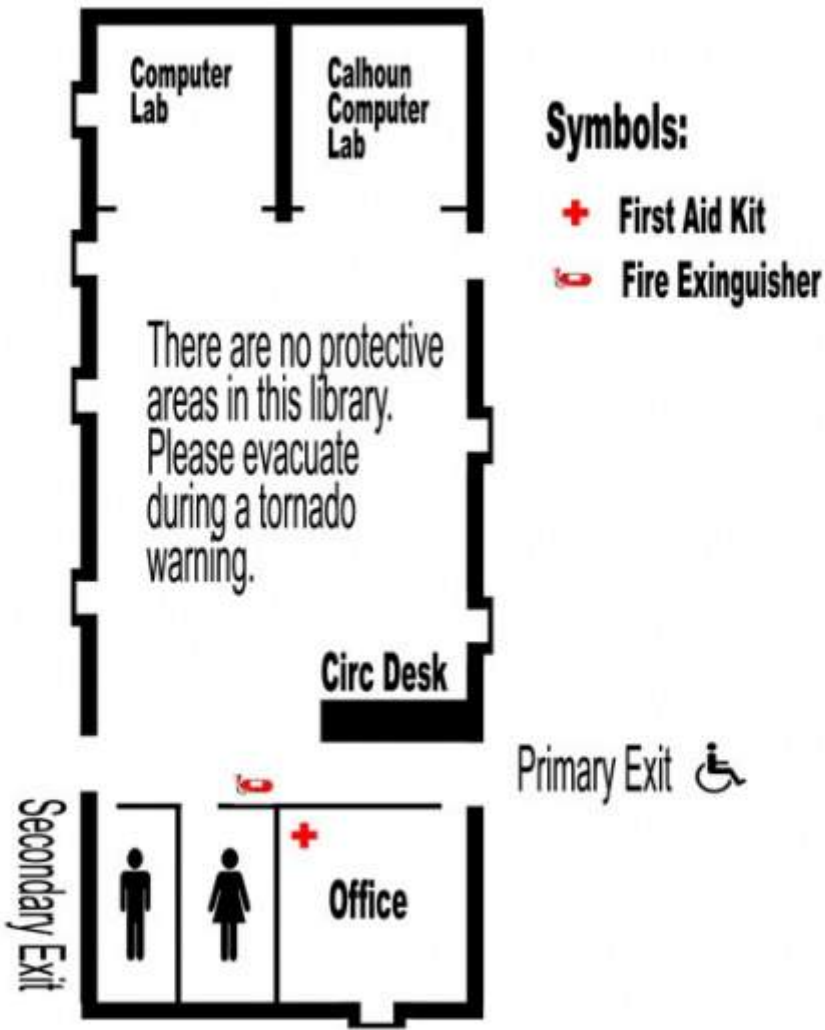


## Protective Area Plan



# Triana Public Library Protective Area Plan

## Triana Public Library

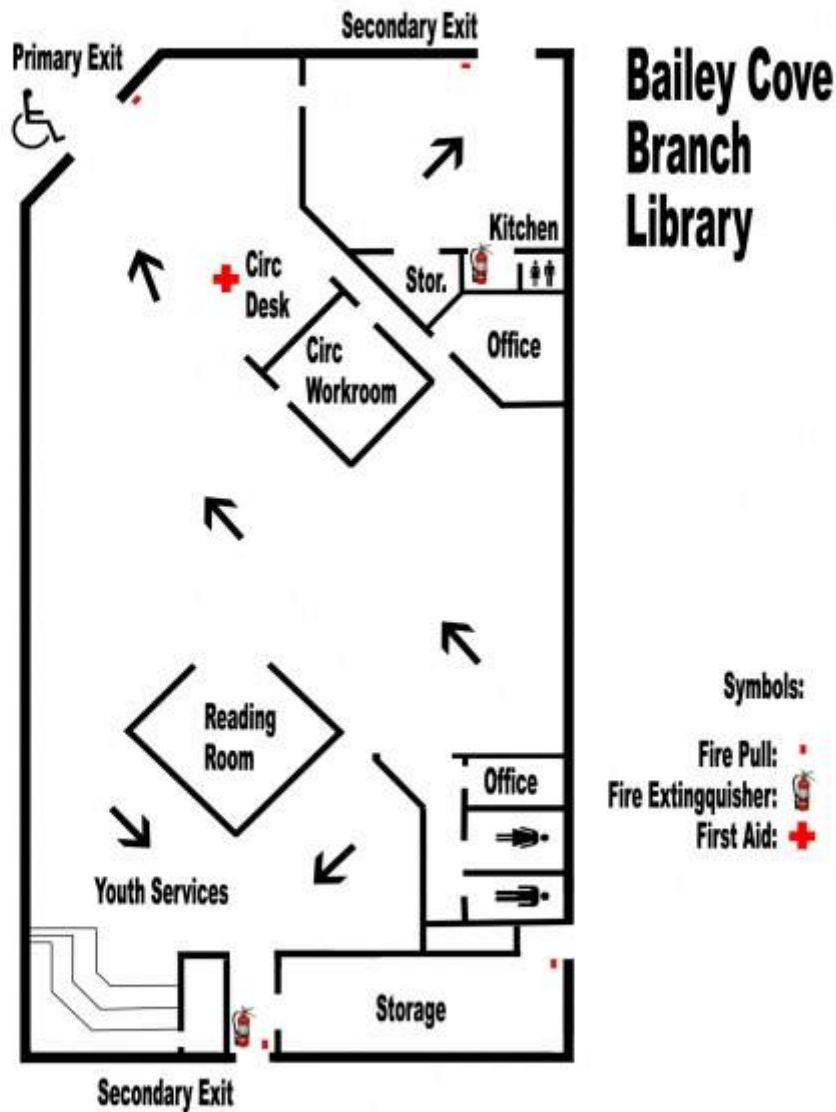


## Protective Area Plan

# Evacuation Plans

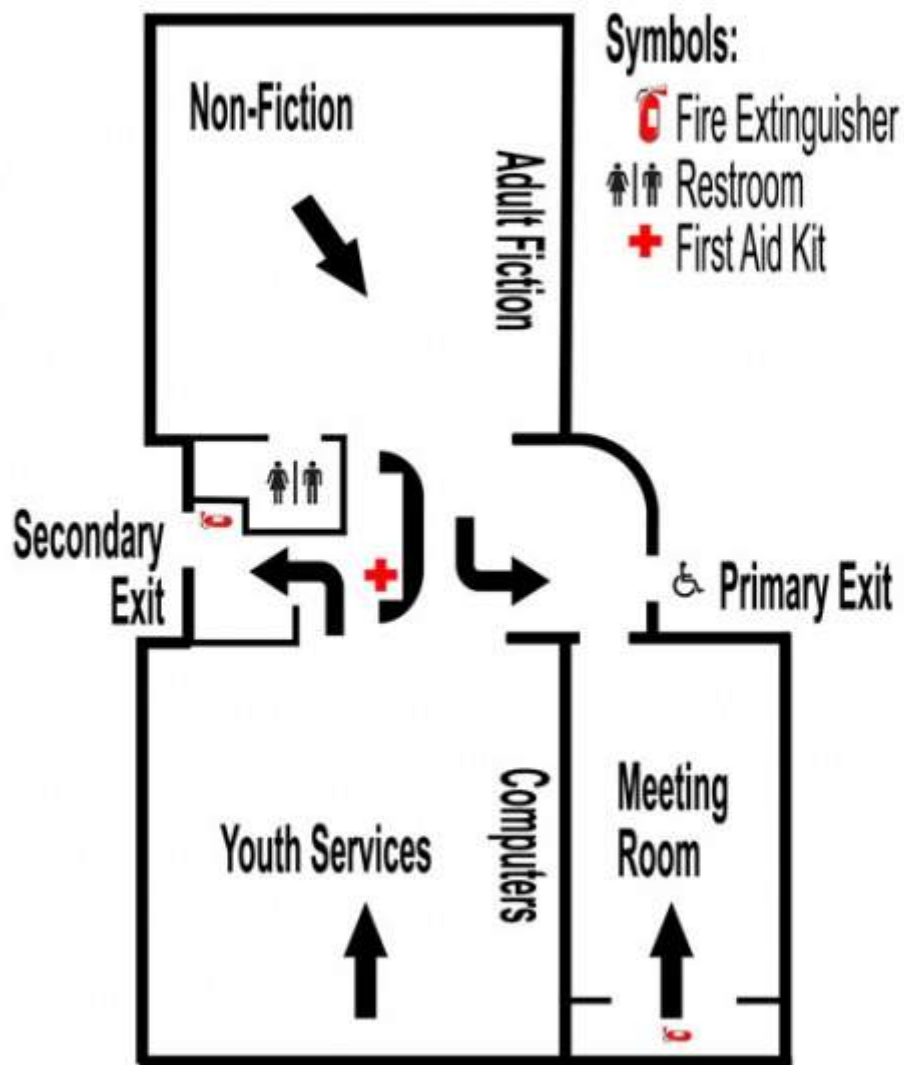
In the event the library is evacuated, please move accordingly:

## Bailey Cove Branch Library Evacuation Route



# Bessie K. Russell Branch Library Evacuation Route

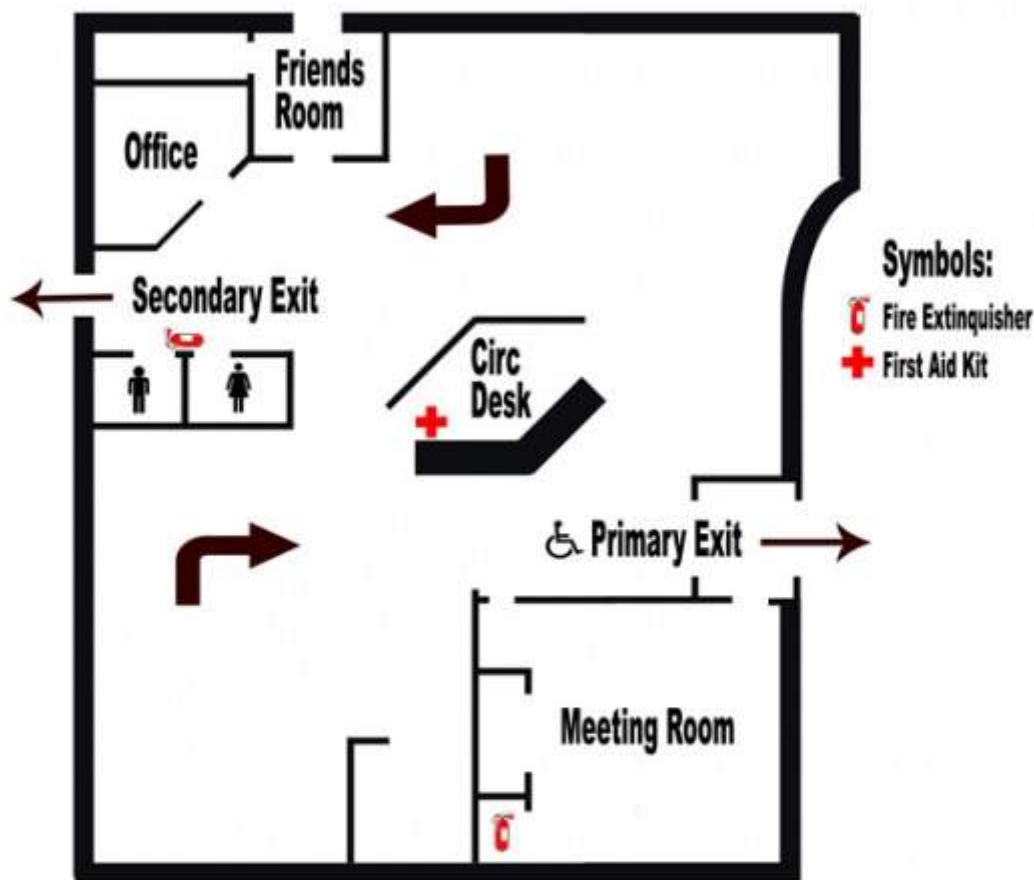
## Bessie K. Russell Branch Library



**Evacuation Route** Please evacuate the building via the closest exit away from any fire or disturbance

# Eleanor E. Murphy Branch Library Evacuation Route

## Eleanor E. Murphy Branch Library

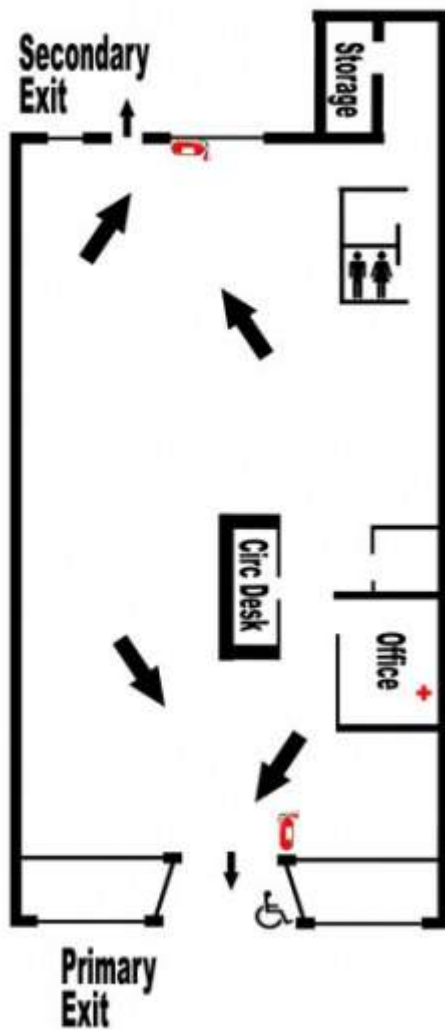


## Evacuation Plan

Please evacuate the building via the closest exit away from fire or disturbance.

# Elizabeth Carpenter Public Library of New Hope Evacuation Route

## Elizabeth Carpenter Public Library of New Hope



### Evacuation Route

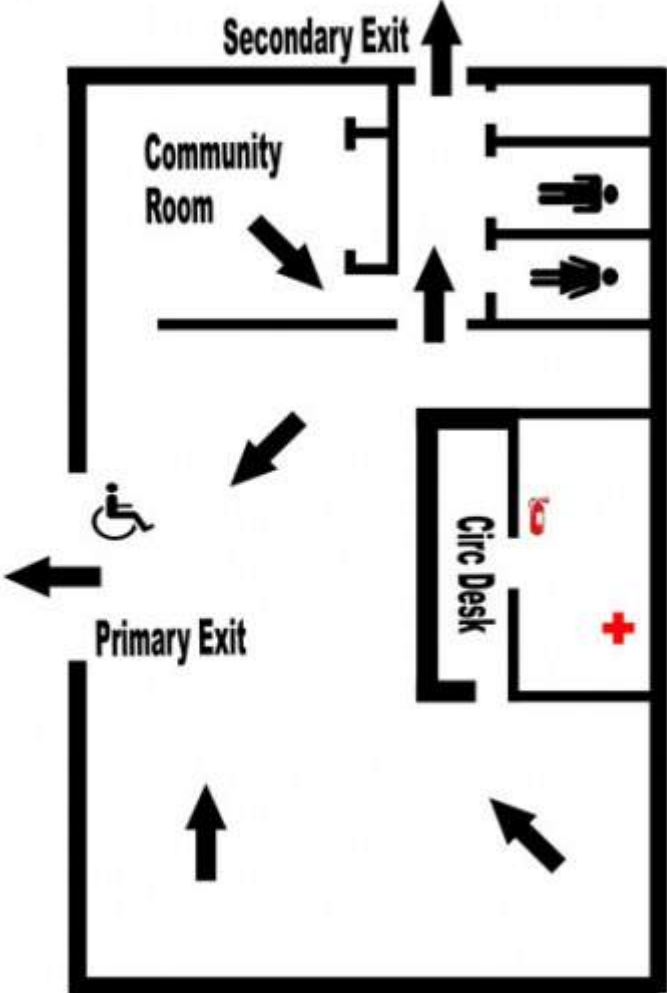
Please evacuate the building via the closest exit away from fire or disturbance.

#### Symbols:

- ➕ First Aid Kit
- 🔥 Fire Extinguisher

# Gurley Public Library Evacuation Route

## Gurley Public Library



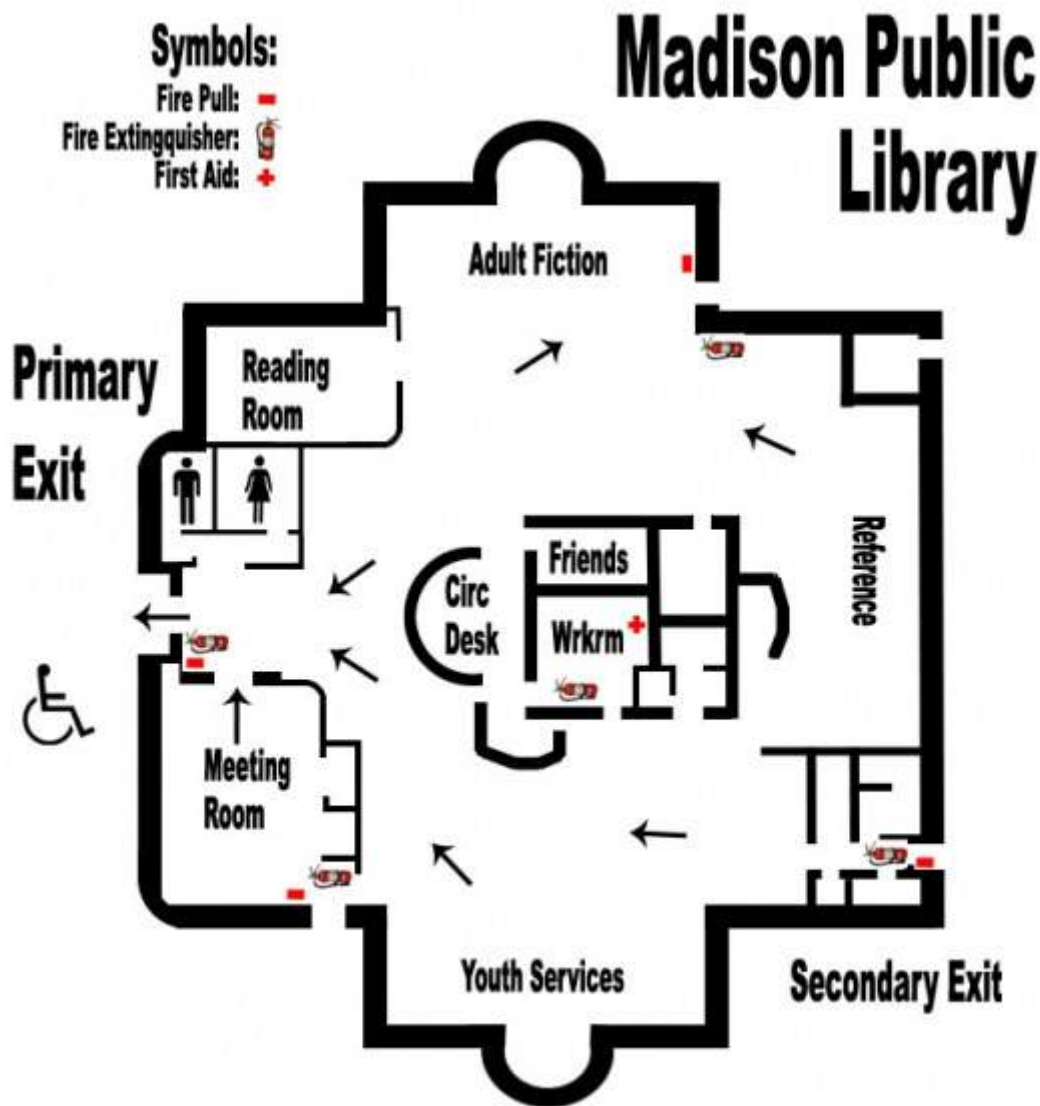
### Symbols:

- Fire Extinguisher
- First Aid Kit

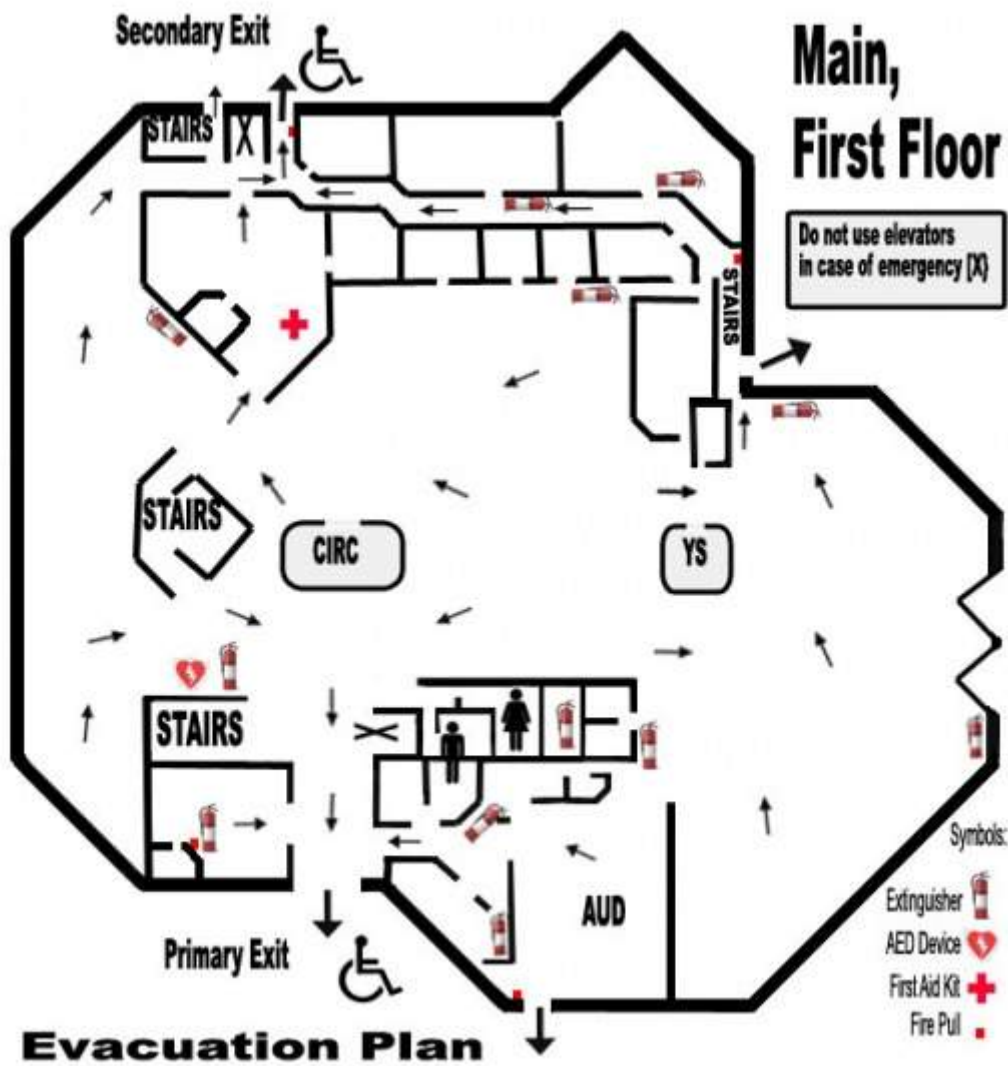
Please evacuate using the closest exit, away from danger.

## Evacuation Route

# Madison Public Library Evacuation Route



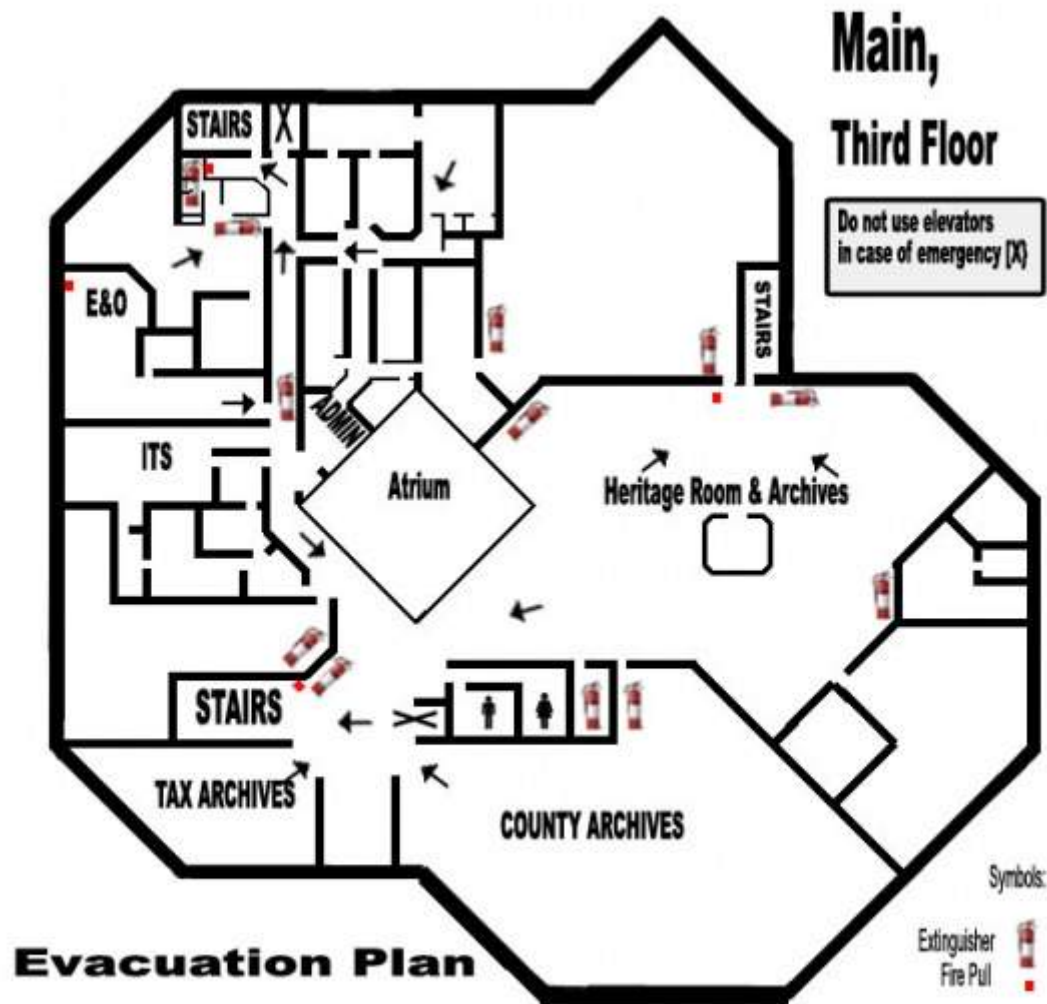
# Main Library First Floor Evacuation Route





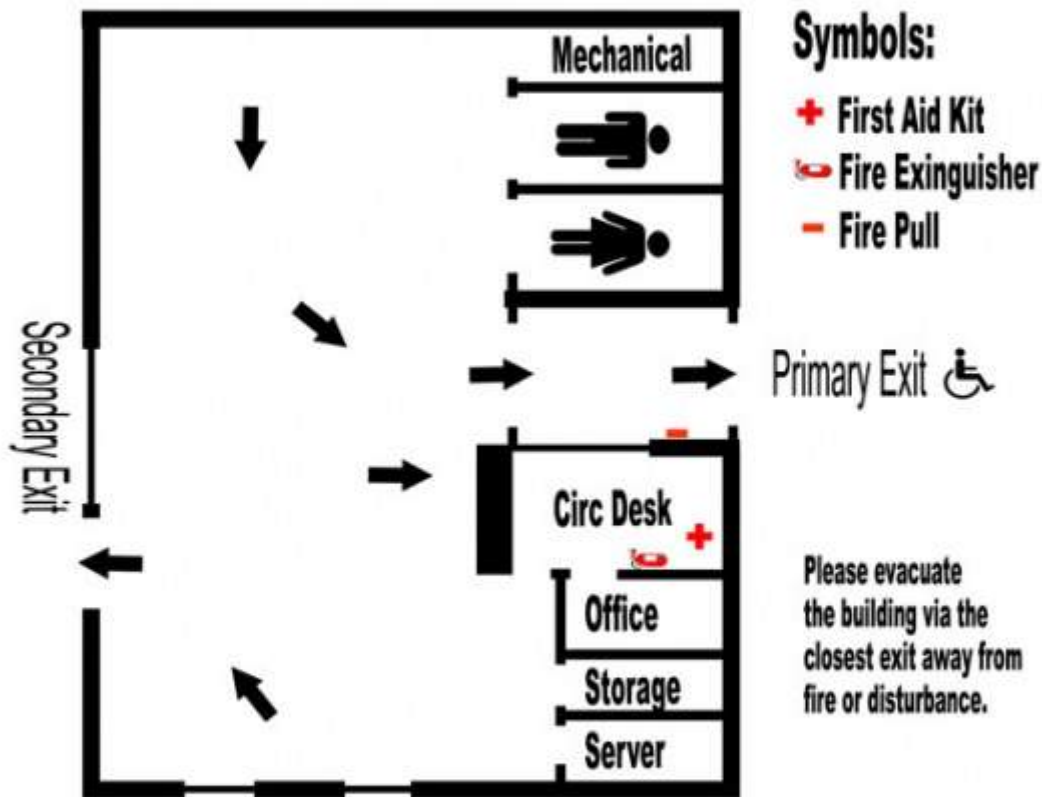


# Main Library Third Floor Evacuation Route



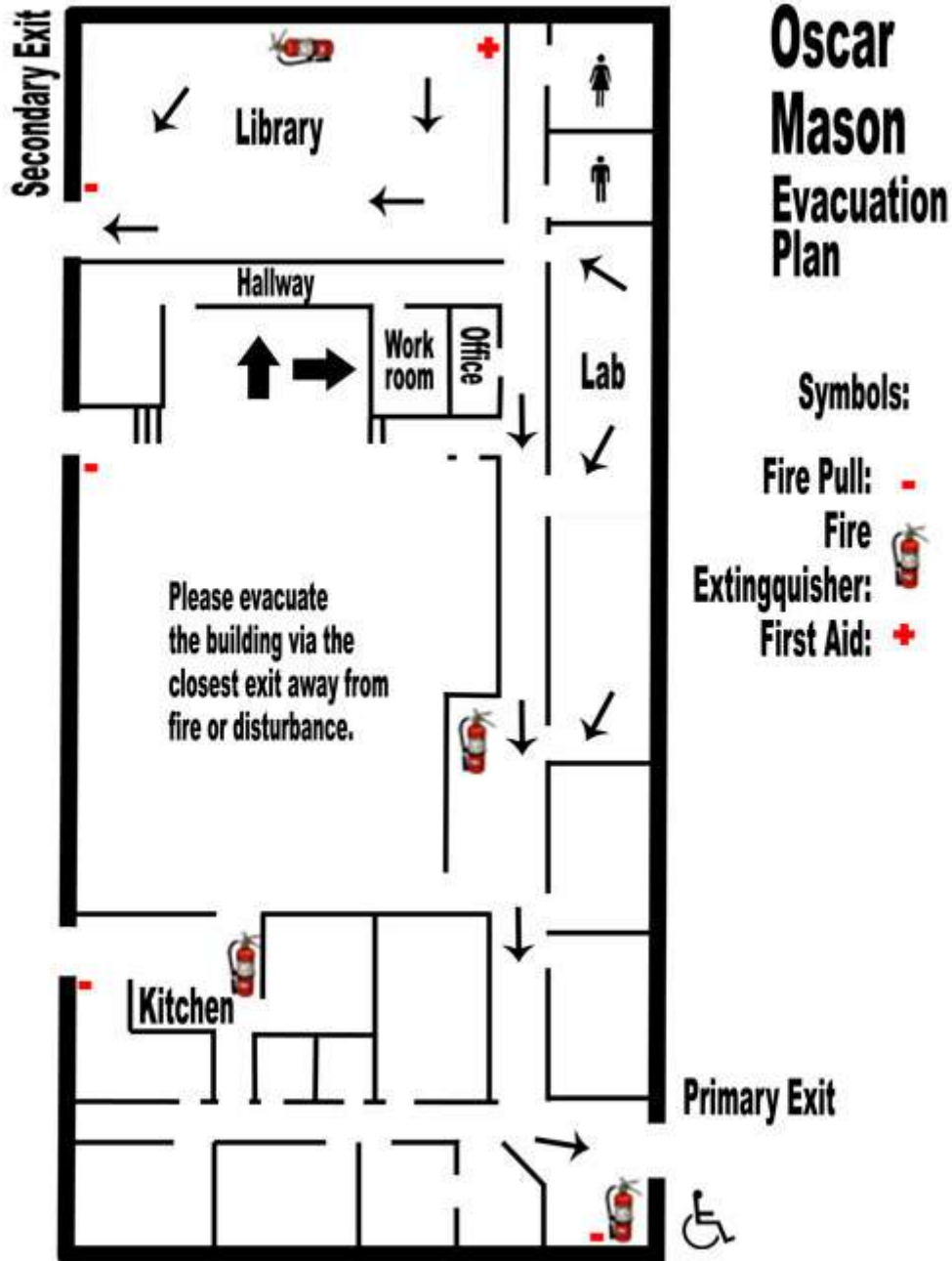
# Monrovia Public Library Evacuation Route

## Monrovia Public Library

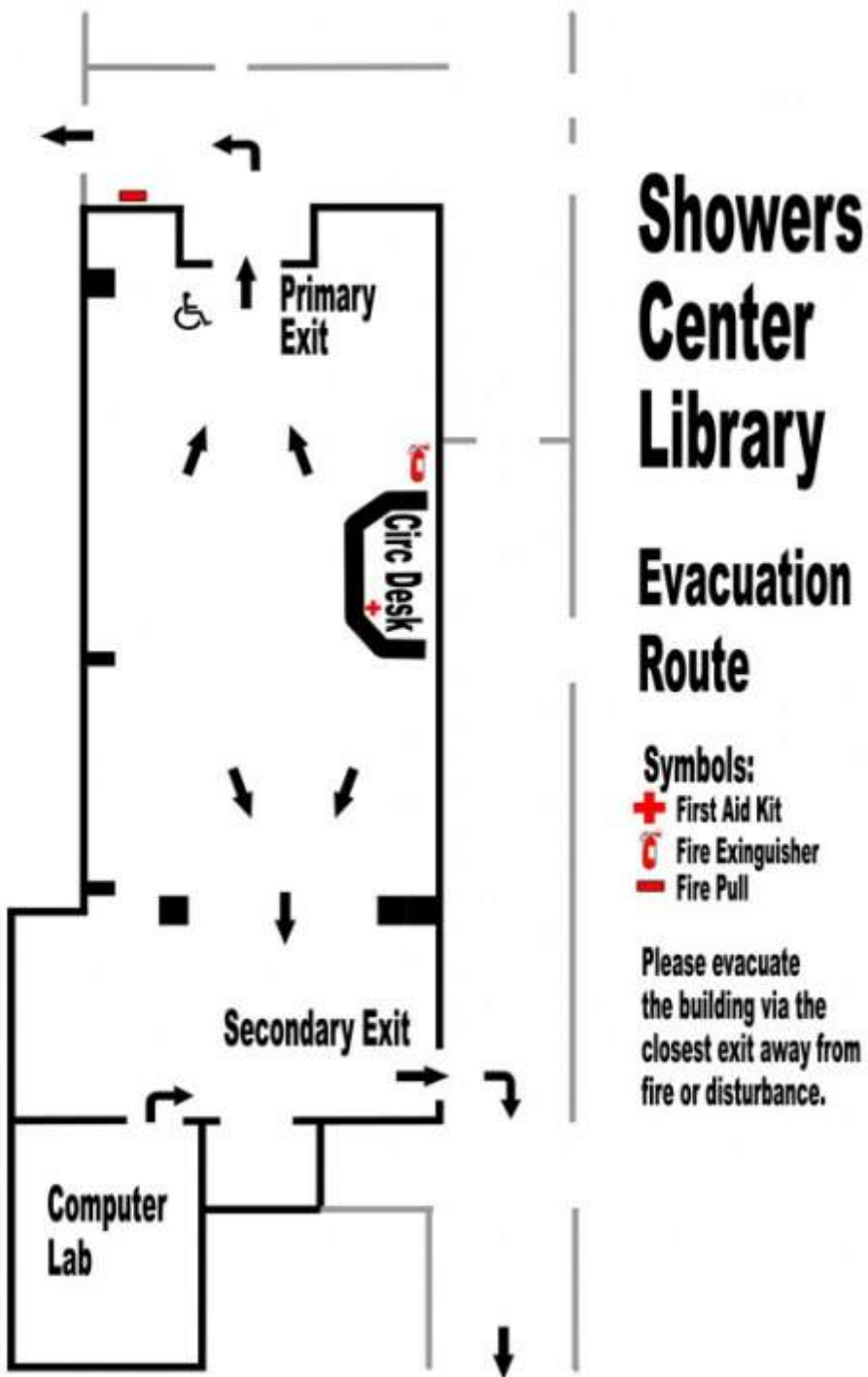


## Evacuation Plan

# Oscar Mason Branch Library Evacuation Route

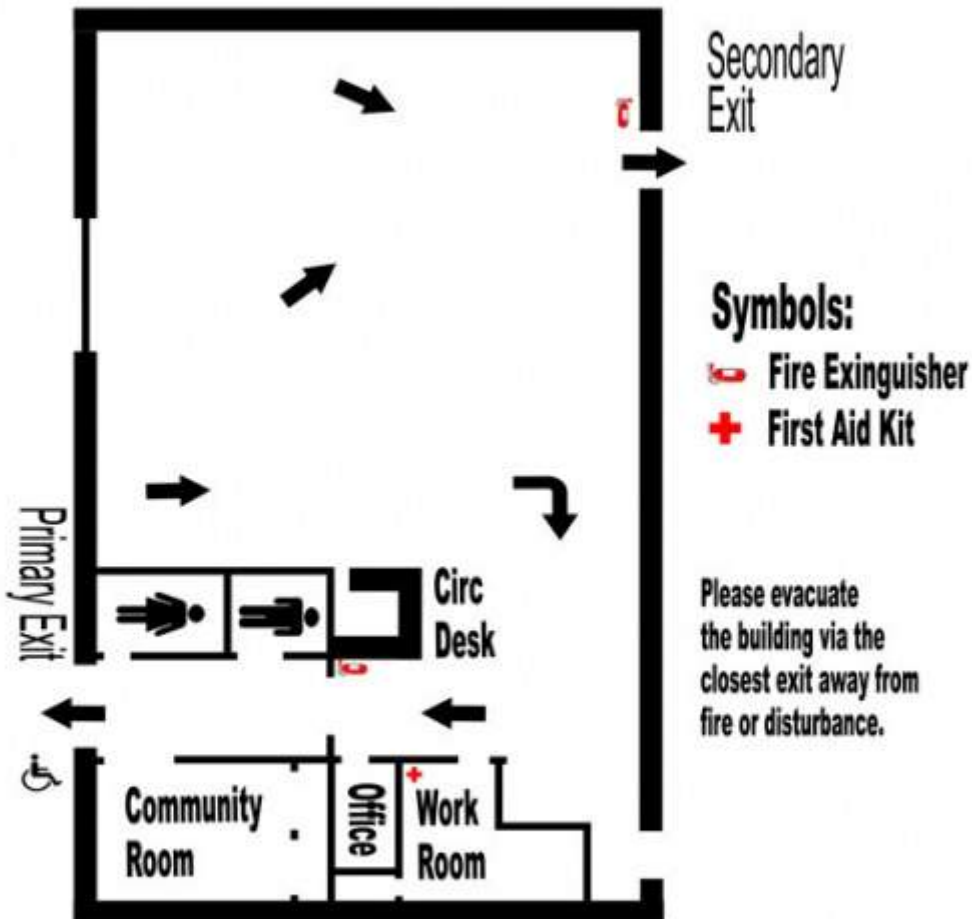


# Showers Center Library Evacuation Route



# Tillman D. Hill Public Library Evacuation Route

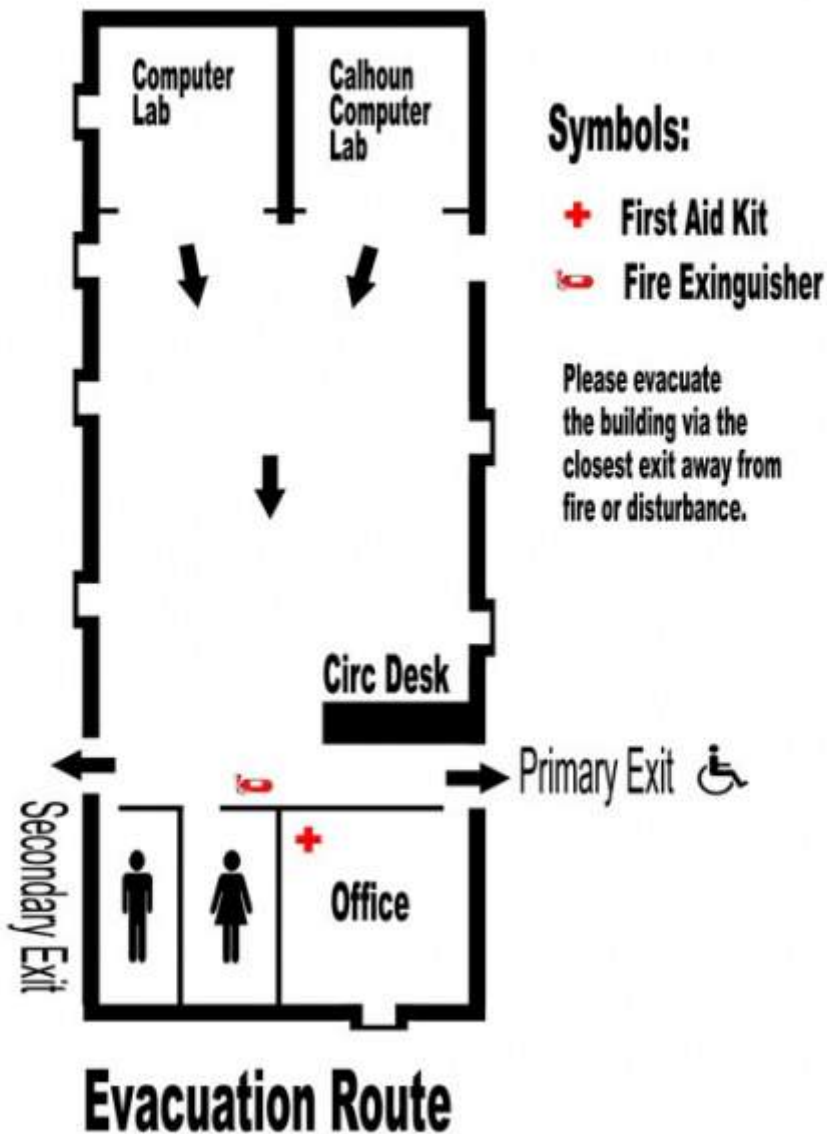
## Tillman D. Hill Public Library



## Evacuation Route

# Triana Public Library Evacuation Route

## Triana Public Library



# **AFTER THE DISASTER**

## **Recovery**

The aim of the recovery phase is to restore the affected area to its previous state. It differs from the response phase in its focus; recovery efforts are concerned with issues and decisions that must be made after immediate needs are addressed. Recovery efforts are primarily concerned with actions that involve rebuilding destroyed property, re-employment, and the repair of other essential infrastructure.

## **The safety and well-being of the staff and patrons are ensured**

### **SAFETY FIRST!**

- Remain calm, reassuring. Alert staff to potential hazards.
- Look for loose or downed power lines. Avoid area. Report problems to local utility.
- Look for electrical system damage: sparks, broken/frayed wires, smell of burning insulation. Turn off electricity at main switch if you can without risk.
- Shut off water.
- If you smell gas or hear blowing or hissing, open a window and immediately leave the building. Turn off gas at main valve if trained to do so. Call gas company at once.
- **DO NOT REENTER THE BUILDING** until declared safe by security or emergency management officials.

### **STABILIZE THE BUILDING & ENVIRONMENT**

- Some building contents may be contaminated. Do not enter without current tetanus shots, protective gloves/clothing, hard hat and NIOSH-approved respiratory mask.
- Identify and repair structural hazards. Brace shelves. Remove debris from floor.
- Reduce temperature and relative humidity at once to prevent mold outbreak. Ideal targets are less than 70° F/45% RH.
- If warm outside, use coldest air conditioning setting; cover broken windows with plastic.
- In cool, low-humidity weather open windows, use circulating fans. If mold is already present, do not circulate air.
- Do not turn on heat unless required for human comfort.
- Remove standing water and empty items containing water; remove wet carpets and furnishings.
- If everything is soaked, use commercial dehumidification except in historic buildings.



- Purchase needed supplies.
- Look for threats to worker safety or collections. Determine status of security systems.
- Look for evidence of mold. Note how long the materials have been wet and the current inside temperature and relative humidity.

## **Facilities checklist for recovery**

1. Contact insurance agent ·
2. Have experts conduct safety inspections and determine facilities damage before allowing staff to enter building ·
3. Shut off electricity, gas, water as needed ·
4. Check halon systems ·
5. Document damage in photos, video ·
6. Determine steps to be taken to repair facilities and resume services

The library Archives, the Madison County Records Center, and the Fran Hamilton Tax Assessor Office are located on the third floor of the library. Be advised that these three repositories house the vast majority of Madison County history.

These three repositories should receive high priority in recovery and mitigation effort's use of available resources to cover their collections or to provide temporary covers for any damaged windows or doors in their departments. A limited supply of clear polyethylene type sheet film such as Visqueen Sheeting should be stored in the maintenance workroom or other designated location along with a suitable quantity of heavy duty duct tape for the purpose of sealing off damaged windows or doors. This sheeting should not be used in an attempt to cover any other large portion or portions of the library collection unless they are not needed for temporarily weatherproofing these three vital areas of the library. Library supervisors and personnel will use extreme care and cautious judgment in covering damaged windows or doors.

From the Northeast Document Conservation Center, 2007

### **Recovery Priorities:**

- A. Put no one's life or health at risk.
- B. With water damage, create fantastic air flow to prevent mold growth.
- C. As possible, freeze wet materials—sort for replacement/discard later.

### **Protection of Artifacts:**

1. Protect objects by covering, lifting, or evacuating if staff is available and capable.

-What should be evacuated first? Framed Portraits, Grey Document Boxes, and Rare Leather-bound Books

2. Diminish mold growth by reducing the temperature and humidity and by promoting air circulation.

-A fan and extension cord is located on the back wall of the Archives.

3. Obtain containers and supports for moving and handling objects: plastic crates, polyethylene sheeting, plywood, saw horses, rubber gloves, dollies, carts.

-There are carts in the Heritage room and Archive suitable for document boxes. Large portraits if not carried by hand, may require a flat cart such as the one in the loading bay hallway. Take care not to scratch oils.

4. Identify temporary storage in aftermath.

-Depending on the nature of the disaster, storage of boxed items might fit in designated secure safety areas such as first floor stairwell any dry areas with no windows.

-temporary freezing facilities might include cold storage

5. Set up work areas for items that need to be packed or air dried

-Locate cold storage or freezing facilities—see companies to be used portion of disaster plan (temporary facilities might include...meat lockers, industrial freezing)

-Handle objects only with rubber gloves, contaminated objects may pose a health hazard. Gloves and lint free rags may be found the archives desk drawer located under the Archives Rare Books sign by the door to the archives room.

-If time and conditions permit, record objects and destination with film, video, or pencil and paper. Take photographs if at all possible.

6. Label object containers

-There are markers and supplies for labeling in the afore mentioned desk drawer.

# Material salvage of books and records

## To Freeze or Not to Freeze

There is a lack of consensus among conservators about which materials you can safely freeze, or freeze-dry – pottery, textiles, basketry, leather, etc. The reason is probably that most conservators have only had experiences freezing drying objects for purposes of pest control or drying waterlogged archaeological materials.

Wet organic artifacts or natural history specimens are different from both aforementioned problems. They are different from dry, pest-infested objects because they are wet and when water is frozen it expands and can cause physical damage on a microscopic scale. They are also different from waterlogged archeological materials, because their cell structure is likely much stronger and more resilient than waterlogged material.

Each case needs to be evaluated individually, weighing risks against benefits, but damage from mold growth or bleeding inks and dyes is very real and time sensitive. If immediate air drying is not feasible, freezing is generally recommended (and as soon as possible), is possible, to delay further damage. That said, there are a few media that are likely to become damaged by the freezing process. These include:

### *Avoid Freezing*

- Wet paintings of any kind
- Wet composite wood objects – picture frames, veneered furniture, musical instruments, complex ethnographic objects.
- Ivory
- Wet collodion negatives, (although water is the problem, not freezing).
- Vellum (again, water is the problem).
- Wet inorganic objects – stone, glass, pottery – because drying time should be relatively quick, the objects won't need much tending during the drying, and also because risk of mold is low and consequences of mold are less serious than with organic collections.

In the case of the first five categories listed, the priority must be to try to prevent these materials from becoming wet in the first place. Proper protection in storage is key.

The recovery of books and records after exposure to a water-based emergency can be successful and cost-effective if staff and management are prepared ahead of time and react in a timely way. However, if decisions and actions are delayed more than a few hours, collections may be lost or so seriously damaged that recovery becomes a major undertaking.

Rapid response is essential for an effective recovery effort. Paper-based collections begin to distort physically immediately after becoming wet. Books swell and distort; paper cockles; inks and pigments run; coated papers begin to adhere to one another. Materials that could be dried easily and relatively inexpensively if attended to quickly become candidates for rebinding, expert conservation, or discard. Unfortunately, many librarians believe that replacement of water-damaged materials is the best solution, only to find that many items are not replaceable. Or they are replaceable in formats that are not acceptable to users or compatible with service goals. Collections of some breadth and depth may never recover their former distinction.

If environmental conditions are poor after a water problem, mold will begin to bloom in as little as 2-3 days, developing first in the gutters and spines of bound materials, and spreading rapidly thereafter. Once established, mold is extremely difficult to control and eradicate, frequently causing problems in the facility for many months after the recovery effort is concluded.

Recovery from exposure to water is more successful if collections and facilities are stabilized as soon as possible. This means that the immediate environment must receive attention. Water must be removed; temperature and humidity controlled; and dry collections protected. At the same time, wet books and records should, in most instances, be removed from the site following accepted procedures, and stabilized by freezing.

After a serious water emergency, questions often arise that deserve attention. Are any of these materials expendable because they no longer are used, have no relationship to the current collection development plan, or have no value? Can they be purchased in another format that will be acceptable to users? Would the purchase in another format create hidden expenses in the future? For example, will there be a need to upgrade equipment, hardware, or software to access the information? Does the institution have obligations to the region or even the world's library?

For books and records that have been water damaged, there are several drying techniques which have been tested and perfected over the past decade. The selection of one or more of these depends upon the extent and severity of water damage, the composition of the materials affected, the expected use and retention of the collections, and the documented facts related to the overt and hidden costs of recovery using various drying methods. These will be described briefly with comments about the kinds of damage and the specific collection materials for which they were developed as well as the short- and long-term costs of employing them.

Advice from a preservation manager or a conservator experienced in disaster recovery can be helpful before making final decisions. If rare books or unique materials are involved, a conservator should always be consulted so mistakes can be avoided. Successful recovery operations over the past decade have demonstrated repeatedly that if sound recovery methods are followed, it is less expensive to dry original collections than to replace them.

It is important to understand that no drying method restores collections. If time must be taken to make critical decisions and materials have distorted badly, that is the way they will look when dry. However, if collections are stabilized quickly, they can often be dried and returned to the shelves with little discernible damage.

## **Air Drying**

Air drying is the oldest and most common method of dealing with wet books and records. It can be employed for one item or many, but it is most suitable for small numbers of damp or slightly wet books and documents. Because it requires no special equipment, it is often believed to be an inexpensive method of drying. But it is extremely labor intensive, it can occupy a great deal of space, and it usually results in badly distorted bindings and textblocks. It is seldom successful for drying bound volumes with coated paper. The rehabilitation costs after air drying tend to be extensive because most bound material requires rebinding. Single sheets are often distorted requiring flattening and rehousing. It is not unusual for mold to develop during extensive air-drying operations. Another hidden cost of air drying is the extra amount of shelf space required for collections. Depending upon how quickly wet materials are stabilized, the minimum amount of additional space required after drying will be 20%-30%.

## **Dehumidification**

Drying by dehumidification has been employed for many years by business and industry to dry out buildings, the holds of ships, and mammoth storage containers. Large, commercial dehumidifiers are placed in a facility with all the collections, equipment, and furnishings left in place. Temperature and humidity are carefully controlled to specifications. This drying method is especially effective for library or archives buildings that have suffered extensive water damage to the structure itself. It can be used for collections that have suffered only slight to moderate water damage, but is not safe for water-soluble inks or pigments. Slightly damp coated paper may be dried this way if swelling and adhesion have not taken place before the process is initiated. The number of items that can be treated with dehumidification is limited only by the expertise or the equipment of the company. This drying method has the advantage of leaving the collections in place on the shelves and in storage containers, eliminating the costly step of removal to a freezer or vacuum chamber. Dehumidification is especially effective in conjunction with other drying methods and for stabilizing the building and environment.

## **Freezer Drying**

A modest number of books and records that are only damp or moderately wet may be dried quite successfully in a self-defrosting blast freezer if left there long enough. The temperature in the freezer must be maintained no warmer than -10 degrees F. Materials should be placed in the freezer as soon as possible after becoming wet. Books will dry best if their bindings are supported firmly to inhibit initial swelling. One method is to support books between clear

acrylic "boards" with holes drilled in them to facilitate drying. The book and boards can be wrapped with a strong elastic cord which will keep them firmly supported as the books dry and shrink slightly. Documents may be placed in the freezer in stacks or spread out for faster drying. Small numbers of leather and vellum bindings can be dried successfully this way. Expect this method to take from several weeks to many months, depending upon the temperature of the freezer and the extent of water damage, because it is a passive technology. Caution is advised with coated paper as leaves may adhere to one another while drying. If items are placed in the freezer very soon after becoming wet, additional shelf or storage space will be held to a minimum.

### **Thermaline or Cryogenic Drying**

This is the copyrighted name for a new drying technique currently being tested and revised to meet special needs. Intended primarily for rare book and manuscript collections, the process was developed to address the difficulty of drying large numbers of rare books bound in leather or vellum. It employs blast freezers at very low temperatures and is an advanced variation of the Freezer Drying method described above, using sophisticated technology to hasten the drying in a more active approach. Because books receive a great deal of individual handling to ensure the most effective drying with the least amount of damage, this process is the most expensive of the drying methods. It is safe for water-soluble media and for coated papers. As with vacuum freeze drying, if carried out properly, Thermaline Drying never distorts materials as a result of the process.

### **Vacuum Freeze Drying**

This process calls for sophisticated equipment and is especially suitable for large numbers of wet books and records as well as for water-soluble inks and for coated paper. Frozen books and records are placed in a vacuum chamber. The vacuum is pulled, a source of heat introduced, and the collections, dried at temperatures below 32 degrees F, remain frozen. The physical process known as sublimation takes place--i.e., ice crystals vaporize without melting. This means that there is no additional wetting, swelling, or distortion beyond that incurred before the frozen materials were placed in the chamber. If materials have been stabilized quickly after becoming wet, very little extra shelf or storage space will be required when they are dry. 10% additional shelf space is a sound estimate to use for planning.

Many coated papers can be difficult to dry without adhering once they are wet. Because it is nearly impossible to determine which paper will block, all coated papers should be treated the same way for the purpose of vacuum freeze drying: before any drying takes place, and ideally within six hours of exposure, materials should be frozen at -10 degrees F or lower. They may then be vacuum freeze dried with a high potential for success. Rare and unique materials can be dried successfully by vacuum freeze drying, but leathers and vellums may not survive. Although this method may initially appear to be more expensive because of the equipment required, the results are often so satisfactory that additional funds for rebinding are not necessary, and mud, dirt and/or soot are lifted to the surface, making cleaning less

time-consuming. If only a few books are dried, vacuum freeze drying can be expensive. However, companies that offer this service are often willing to dry one client's small group of books with another client's larger group, reducing the per-book cost and making the process affordable.

### **Vacuum Thermal Drying**

Books and records that are slightly to extensively wet may be dried in a vacuum thermal drying chamber into which they are placed either wet or frozen. The vacuum is drawn, heat is introduced, and the materials are dried just above 32 degrees F. This means that the materials stay wet while they dry. This method is used extensively in the food industry for freeze drying certain foods. It is an acceptable method of drying wet records that have no long-term value. The method often produces extreme distortion in books, and almost always causes blocking of coated paper. For large numbers of collections, vacuum thermal drying is easier than air drying and almost always more cost-effective. However, extensive rebinding or recasing of books should be expected as should the need for expanded shelf or storage space.

### **How to Air Dry Wet Records**

Wet records may be air dried if care is taken to follow guidelines suggested by preservation experts. The technique is most suitable for small numbers of records that are damp or water damaged only around the edges. If there are hundreds of single pages, or if the water damage is severe, other methods of drying will be more satisfactory and cost-effective. Stacks of documents on coated, or shiny, paper must be separated immediately to prevent adhesion, or they must be frozen to await a later drying decision. Care must be taken with water-soluble inks as well. Records with running or blurred inks should be frozen immediately to preserve the written record. After the items are frozen, conservators can be contacted for advice and assistance.

If records must be air dried, the following steps will help achieve satisfactory results. Wet paper is extremely fragile and easily torn or damaged, so care must be exercised. Once wet, records will never look the same, and at least some cockling should be expected.

1. Secure a clean, dry environment where the temperature and humidity are as low as possible. The temperature must be below 70 degrees F. and the humidity below 50%, or mold will probably develop and distortion will be extreme.
2. Keep the air moving at all times using fans in the drying area. This will accelerate the drying process and discourage the growth of mold. If materials are dried outside, remember that prolonged exposure to direct sunlight may fade inks and accelerate the aging of paper. Be aware that breezes can blow away single records. Train fans into the air and away from the drying records.

3. Single leaves can be laid out on tables, floors, and other flat surfaces, protected if necessary by paper towels or clean, unprinted newsprint, or clotheslines may be strung close together and records laid across them for drying.
4. If records are printed on coated paper, they must be separated from one another to prevent them from sticking. This is a tedious process that requires skill and patience. Practice ahead of time will prove useful. Place a piece of polyester film on the stack of records. Rub it gently down on the top sheet. Then slowly lift the film while peeling off the top sheet. Hang the polyester film up to dry on a clothesline using clothespins. As the document dries, it will separate from the surface of the film, so it must be monitored carefully. Before it falls, remove it and allow it to finish drying on a flat surface.
5. Once dry, records may be rehoused in clean folders and boxes, or they may be photocopied or reformatted in other ways. Dried records will always occupy more space than ones that have never been water damaged.

### **How to Air Dry Wet Books**

Air drying is most appropriate for books that are only damp or wet in limited places such as along the edges. Books that are soaking wet should be frozen and vacuum freeze dried to minimize cockling of pages and distortion of the text block and binding. Books containing coated paper should be frozen while still wet and vacuum freeze dried for best results. Books with running or blurred inks must be frozen immediately to preserve the contents.

Refer to steps 1 and 2 in the section How to Air Dry Wet Records.

1. Interleave every few pages, starting from the back of the book, turning pages carefully. For interleaving, use paper towels or clean, unprinted newsprint. Be careful to avoid interleaving too much or the spine will become concave and the volume distorted. Complete the interleaving by placing clean blotter paper inside the front and back covers. Close the book gently and place it on several sheets of absorbent paper. Change the interleaving frequently. Turn the book from head to tail each time it is interleaved.
2. When books are dry but still cool to the touch, they should be closed, laid flat on a table or other horizontal surface, gently formed into the normal shape, with convex spine and concave front edge (if that was their original shape), and held in place with a light weight. Do not stack drying books on top of each other. In no case should books be returned to the shelves until thoroughly dry; otherwise mold may develop, particularly along the gutter margin.
3. Dampness will persist for some time in the gutter, along the spine, and between boards and flyleaves. This is particularly true of volumes sewn on an oversewing machine. Check often for mold growth while books are drying.
4. If the edges of the book are only slightly wet, the book may be stood on end and fanned open slightly in the path of a flow of air (as from a fan). To minimize



distortion of the edges, lay volumes flat under light pressure just before drying is complete. Paper or cloth-covered bricks work well for weights.

5. If you can establish an air-conditioned room capable of maintaining a constant relative humidity of 25 to 35% and temperature between 50 and 65 degrees F, books with only wet edges can be dried successfully in approximately two weeks without interleaving. Do not try to dry books printed on coated paper by this method. In most cases, the only chance of saving such books is to freeze them while they are wet and dry them by vacuum freeze drying.

**Sally Buchanan, Associate Professor**  
**School of Information Science**  
**University of Pittsburgh**

Northeast Document Conservation Center, 2007

## **Continuity of library service and operations begin**

Based on the Continuity of Operations Procedures outlined in the Preventative section, continuity of library service and operations begin as soon as the safety and well-being of staff and patrons is ensured.

## **Acknowledgements**

The first Readiness and Emergency Management Procedures Guide, a print document, was first approved by the Library Board during February of 2008. The guide was developed by Marianne Lenox (lead), Sue Royer, Regina Cooper, Susan Markham, Donna Noojin, John Poleretzky, David Johnson, Deborah Jackson, Louise Brandon, Martin Towery, BJ Johnson and Sherry Lee. Based on the original, flip-chart Emergency Plan, Michele McCrary of First Commercial Bank and Kirk Paradise (and his planning team at the Huntsville Madison County Emergency Management Agency) also contributed to the document.

Updates to the guide were first written by the Disaster Planning Team were approved by the Library Board in September of 2010. These updates were written as the "Response" of a more complete disaster and continuity plan which includes sections on Mitigation, Preparedness, and Recovery. The final Disaster Plan is available in both print and online at <http://staffspace/disasterplan>.

The Disaster Planning Team members are Marianne Lenox (Lead), Aaron Sakovich, Bobby Lipscomb, Brian Bess, Cheryl Wernle, Connie Chow, Laurel Best, Rosalind Lett, Sue Royer, Susanna Leberman, and Wanda Cross.

This plan was submitted to the Library Board on February 16, 2011 and was approved as guidelines in order to prepare, prevent, respond and recover from potential disasters within the Huntsville - Madison County Public Library.

**APPENDIX A: Facilities Information Form [Name of Branch or Location: \_\_\_\_\_ ]**

Building Owner: \_\_\_\_\_  
Contact: \_\_\_\_\_

Emergency Phone Number: \_\_\_\_\_  
Business Office Phone Number: \_\_\_\_\_

Electric Utility: \_\_\_\_\_  
Contact: \_\_\_\_\_

Emergency Phone Number: \_\_\_\_\_  
Business Office Phone Number: \_\_\_\_\_  
Location of Main on/off: \_\_\_\_\_

Gas Utility: \_\_\_\_\_  
Contact: \_\_\_\_\_

Emergency Phone Number: \_\_\_\_\_  
Business Office Phone Number: \_\_\_\_\_  
Location of Main on/off: \_\_\_\_\_

Water Utility: \_\_\_\_\_  
Contact: \_\_\_\_\_

Emergency Phone Number: \_\_\_\_\_  
Business Office Phone Number: \_\_\_\_\_  
Location of Main on/off: \_\_\_\_\_

Telephone Utility: \_\_\_\_\_  
Contact: \_\_\_\_\_

Emergency Phone Number: \_\_\_\_\_  
Business Office Phone Number: \_\_\_\_\_  
Location of Main on/off: \_\_\_\_\_

Other: \_\_\_\_\_  
Contact: \_\_\_\_\_

Emergency Phone Number: \_\_\_\_\_  
Business Office Phone Number: \_\_\_\_\_  
Location of Main on/off: \_\_\_\_\_

**Local Governance**

Emergency Management Office: \_\_\_\_\_  
Local City Hall: \_\_\_\_\_  
Facilities Manager: \_\_\_\_\_

Phone: \_\_\_\_\_  
Phone: \_\_\_\_\_  
Phone: \_\_\_\_\_

**Locations of Important Items**

Please explain where the following items are found in your location:

Fire Extinguisher: \_\_\_\_\_  
Light Switches: \_\_\_\_\_  
Flash Lights: \_\_\_\_\_  
First Aid Kits: \_\_\_\_\_  
Weather Radio: \_\_\_\_\_  
Transistor Radio: \_\_\_\_\_  
Batteries: \_\_\_\_\_  
Special Keys: \_\_\_\_\_  
Fire Pulls: \_\_\_\_\_  
Other important information: \_\_\_\_\_  
\_\_\_\_\_

## APPENDIX B: Qualitative Risk Assessment Survey

LOCATION: SAMPLE

Risk	Possibility	Impact: Personnel	Impact: Collections	Impact: Facilities	Score
	0 - Not Likely	0 - None	0 - None	0 - None	
1 - Very Low	1 - Some	1 - Some	1 - Some	1 - Some	
2 - Medium	2 - Moderate	2 - Moderate	2 - Moderate	2 - Moderate	
3 - High	3 - Significant	3 - Significant	3 - Significant	3 - Significant	
4 - Very High	4 - Severe	4 - Severe	4 - Severe	4 - Severe	

### Is the Branch Located in an area with these natural hazards?

Severe Thunderstorms / Lightning / Winds	4	4	3	4	44
Hazardous Material Incidents / Accidents	2	1	1	3	10
Floods	3	2	4	3	27
Tornados	3	2	3	3	24
Heat Wave	3	3	0	1	12
Winter Storms	2	2	0	2	8
Major Fire	2	3	3	3	18
Civil Disturbance	1	3	0	2	5
Energy Emergencies	2	1	0	2	6
Radiological Accidents	1	2	0	0	2
Transportation Accidents	1	2	0	0	2
Terrorism	1	2	0	2	4
Dam Failure	1	1	1	1	3
Landslide	2	2	2	2	12
Earthquakes	1	1	0	1	2
Nuclear Attack	2	3	5	3	22

### Does the location have a history of any of the following?

Asbestos	1	3	0	0	3
Assaults	3	3	0	0	9
Bomb Blasts	1	2	1	1	4
Bomb Threat	2	1	0	0	2
Embezzlement	1	1	0	0	1
Indoor Air Quality Problems	4	3	0	0	12
Infections Disease Outbreak	4	3	0	0	12
Kidnapping	4	3	0	0	12
Labor dispute	0	2	0	0	0
Murder	0	0	0	0	0

Robbery	1	1	0	0	1
Sabotage	2	3	1	4	16
Stalking	1	3	0	0	3
Threats	3	3	1	0	12
Roof Leaks	1	3	0	0	3
Plumbing leaks	1	3	0	0	3
Shelving collapsing or falling	3	3	1	0	12

Total Risk Score: 288

**Multiply Possibility by Combined Impacts to Calculate Score. Higher scores require more Response / Recovery Planning.**

Chart adapted from:

<http://www.disaster-recovery-planning.com/>

Hazards adapted from:

<http://www.madisoncountyma.com/Hazards.htm#st>

[http://www.ems-solutionsinc.com/pdfs/HAZARD\\_ASSESSMENT\\_SURVEY.pdf](http://www.ems-solutionsinc.com/pdfs/HAZARD_ASSESSMENT_SURVEY.pdf)

**APPENDIX D: Contact Information Name of Branch or Location:**

**Upper Management:**

Name: \_\_\_\_\_

Address: \_\_\_\_\_

\_\_\_\_\_

\_\_\_\_\_

Work Phone: \_\_\_\_\_

Cell Phone: \_\_\_\_\_

Home Phone: \_\_\_\_\_

Other: \_\_\_\_\_

Name: \_\_\_\_\_

Address: \_\_\_\_\_

\_\_\_\_\_

\_\_\_\_\_

Work Phone: \_\_\_\_\_

Cell Phone: \_\_\_\_\_

Home Phone: \_\_\_\_\_

Other: \_\_\_\_\_

Name: \_\_\_\_\_

Address: \_\_\_\_\_

\_\_\_\_\_

\_\_\_\_\_

Work Phone: \_\_\_\_\_

Cell Phone: \_\_\_\_\_

Home Phone: \_\_\_\_\_

Other: \_\_\_\_\_

Name: \_\_\_\_\_

Address: \_\_\_\_\_

\_\_\_\_\_

\_\_\_\_\_

Work Phone: \_\_\_\_\_

Cell Phone: \_\_\_\_\_

Home Phone: \_\_\_\_\_

Other: \_\_\_\_\_

Name: \_\_\_\_\_

Address: \_\_\_\_\_

\_\_\_\_\_

\_\_\_\_\_

Work Phone: \_\_\_\_\_

Cell Phone: \_\_\_\_\_

Home Phone: \_\_\_\_\_

Other: \_\_\_\_\_

**Persons in Charge in Case of Emergency:**

Name: \_\_\_\_\_

Work Phone: \_\_\_\_\_

Cell Phone: \_\_\_\_\_

Other: \_\_\_\_\_

Name: \_\_\_\_\_

Work Phone: \_\_\_\_\_

Cell Phone: \_\_\_\_\_

Other: \_\_\_\_\_

Name: \_\_\_\_\_

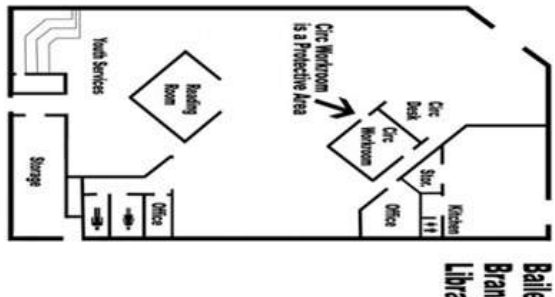
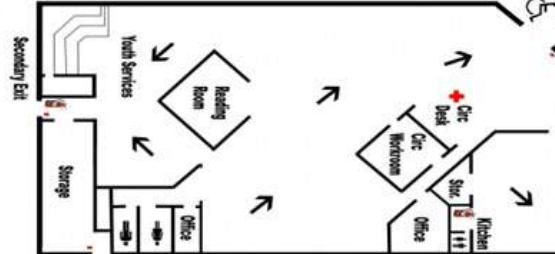
Work Phone: \_\_\_\_\_

Cell Phone: \_\_\_\_\_

Other: \_\_\_\_\_

# Appendix CC: Sample Library Prep™

<p><b>Bailey Cove Branch Library</b>  <b>Pocket Response Plan™ (PR&amp;P™)</b>          1409 Weatherly Plaza SE          Huntsville, AL 35893          (256) 881-0257</p> <p><b>BRANCH CONTACTS</b>          Branch Manager          Patsy Ducote          home phone: 256-858-8553          cell phone: 256-428-2059</p> <p>Circulation Supervisor          Jan Andrews          cell phone: 256-605-2243</p> <p>Youth Services Librarian          Julia Thronon          cell phone: 256-366-2874</p> <p><b>INSTITUTIONAL CONTACTS</b>          Executive Director: Laurel Best          work phone: 256-532-5961          home phone: 256-658-3891          cell phone: 256-361-8303</p> <p>Assistant/Denputy Director: Sue Royer          work phone: 256-532-5962          home phone: 256-539-4287          cell phone: 256-679-2942</p> <p>Associate Director Ext &amp; Outreach:          Susan Markham          work phone: 256-532-5961          home phone: 256-682-3299          cell phone: 256-679-6284</p> <p>Madison County District Four          Emergency Beeper: 256-720-8304          Business Office Phone Number:          256-852-8361</p>	<p><b>FIRST RESPONDERS</b>          Dial 911 for all emergencies.</p> <p>Police Department          (non-emergency) 256-722-7100</p> <p>Fire Department          (non-emergency) 256-722-7120</p> <p>Emergency medical/ambulance service          (non-emergency) 256-722-7158</p> <p><b>LOCATION OF IMPORTANT ITEMS</b>          Fire Extinguisher: One in the kitchen area of the meeting room, another in the back hallway near the storage area</p> <p>Light Switches: In back of building near Youth Services next to the storage room</p> <p>Flash Lights: Middle cabinet at front desk</p> <p>Weather Radio: Front desk</p> <p>Special Keys: Left cabinet at front desk</p>	<p><b>Person in Charge in Case of Emergency Flowchart</b></p> <pre>         graph TD             Start([An emergency occurs within the library]) --&gt; Decision{Could the event be life threatening or perhaps there is a crime being committed?}             Decision -- No --&gt; Call911[Call 911]             Decision -- Yes --&gt; Call911             Call911 --&gt; StayPut[Stay calm. State which emergency agency you need: Police, Fire or EMS/ Ambulance. Speak clearly. State your agency. Stay on the line until the unit the operator tells you otherwise. They may ask questions regarding the emergency or they may give you instructions to help stabilize the patient before the ambulance gets to your location. If you can stay by the phone in case the dispatcher needs to call you back. Identify the Person in Charge in Case of Emergency.]             StayPut --&gt; PersonInCharge{The Person in Charge in Case of Emergency is changed with:}             PersonInCharge --&gt; IsSecurityPersonnel{Is there security personnel in the library?}             IsSecurityPersonnel -- No --&gt; IsCirculationManager{Is there a Circulation Manager or Supervisor in the library?}             IsCirculationManager -- No --&gt; IsDisasterPlan{Is there a Disaster Plan or the Person in Charge in Case of Emergency?}             IsDisasterPlan -- No --&gt; Call911             IsDisasterPlan -- Yes --&gt; Call911             IsSecurityPersonnel -- Yes --&gt; IsDisasterPlan             IsCirculationManager -- Yes --&gt; Call911             PersonInCharge --&gt; Concentration[Concentrating on a sound decision making in regard to the safety and patrons of the library. Coordinating with City Incident Commander or responders during the event. Taking a leadership role during an emergency including organizing responsibilities. Overseeing/leading supervisors and staff on the Organization Chart. Documenting all activity in an Accident or Security Incident report after the event.]             Call911 --&gt; PersonInCharge             </pre>
<p><b>Disaster Recovery Team (DRT) Members:</b>          Preservation Specialist          Susannah Leberman,          work phone: 256-532-5369          home phone: 256-881-4339          emergency phone : 256-733-2536</p> <p>CERT member          Bobby Lipscomb          work phone: 256-532-5981          cell phone : 256-684-5950          spouse s cell phone: 256-684-7440</p> <p>Facilities Director          Sue Royer          work phone: 256-532-5952          home phone: 256-539-4287          cell phone : 256-679-2942</p> <p>Disaster Planning Team Lead          Marianne Lenox          work phone: 256-532-2352          cell phone: 256-653-7471          home phone 256-828-7255</p> <p>The group has no formal charge, but team members are trained to clean, move and pack out damaged materials where time is a critical factor.</p> <p><b>MAIN LIBRARY NUMBERS</b>          Person in Charge in Case of Emergency (Main)          cell phone: 256-503-7823</p> <p>ITS          Work phone: 256-532-5963          Cell phone: 256-652-5963</p>	<p><b>WHERE TO GO DURING THE DISASTER</b>          Severe Weather: Bailey Cove Branch Library Protective Area is in the circulation workroom.</p> <p>Fire Alarm: All staff and patrons gather in the front parking lot but avoid fire lanes.</p> <p>Hazardous Materials: For a major spill, evacuate and assemble a safe distance – upwind from the spill.</p> <p>Power Outage: Proceed cautiously to an area with emergency lights.</p> <p>Bomb Threat: All staff and patrons gather in the front parking lot but avoid fire lanes</p> <p>Shelter in Place: Shelter-in-place means selecting a small, interior room, with no or few windows, and taking refuge there. Each location will use their assigned protective area for shelter-in-place.</p>	<p><b>HMCPL EMERGENCY CODIS</b></p> <p><b>Any Injury</b>          Dangerous Contamination          Medical Emergency</p> <p><b>Missing or Abducted Child</b></p> <p><b>Chemical or Hazardous Substance Spill</b></p> <p><b>Impending Tornado or Thunderstorm</b></p> <p><b>MAN DIAL 9997 TO ANNOUNCE</b></p>

<p><b>Facilities Information</b></p> <p><b>Building Owner</b> City of Huntsville Contact: Jeff Easter business phone: 256-427-5660</p> <p><b>Electric Utility</b> Huntsville Utilities emergency number: 256-535-4448 business phone: 256-535-1200 Location of Main on/off: storage room, SW corner of building</p> <p><b>Water Utility</b> Huntsville Utilities emergency number: 256-535-4448 business phone: 256-535-1200 Location of Main on/off: outside loading dock door</p> <p><b>Telephone Utility</b> ATT Southeast (BellSouth) emergency number: 1-800-247-2020 business phone: 1-866-620-8900 Location of Main on/off: storage room and eastern most part of lot, near bushes</p> <p><b>LOCAL GOVERNANCE</b></p> <p>Emergency Management Agency phone: 256-427-5130</p> <p>Local City Hall phone: 256-427-5000</p> <p>City General Services phone: 256-427-5660</p>	<p><b>NON-REPLACEMENT ITEMS</b></p> <p>A list of non-replaceable items in the collection that are to be removed at the risk of severe weather or flooding.</p> <p>In the case of immediate danger such as fire, only grab keys, purses and backpacks if they are nearby.</p> <p><b>Item/ Location</b></p> <ul style="list-style-type: none"> <li>One box of Friends of the Library Records</li> </ul>	<p>Library Protective Area Plan</p>  <p><b>Bailey Cove Branch Library</b></p>	<p>Library Evacuation Route</p>  <p><b>Bailey Cove Branch Library</b></p> <p><b>Symbols:</b> Fire Exit: red dot Fire Extinguisher: red cross Fire Exit: red cross</p>
---	---	---	--

RRAP™ © 2006 Council of State Archivists (COSSA)



## Appendix EE: Disaster Kit Inspection Form

The following items are to be examined at least every six (6) months in January and June of each year for full operational readiness by the Person In Charge (PIC) or the PIC's authorized delegate.

Fire Extinguisher Charged & Inspected \_\_\_\_\_

First Aid Kit Complete & Inspected \_\_\_\_\_

Weather Radio Operational & Inspected \_\_\_\_\_

Flashlight Operational & Inspected \_\_\_\_\_

Disaster Plan & Contact Info. Present \_\_\_\_\_

Disaster Kit Items specific to your  
location or department present and useable \_\_\_\_\_

Please give details below if any of the above items need to be replaced or changed. Forward this report to:

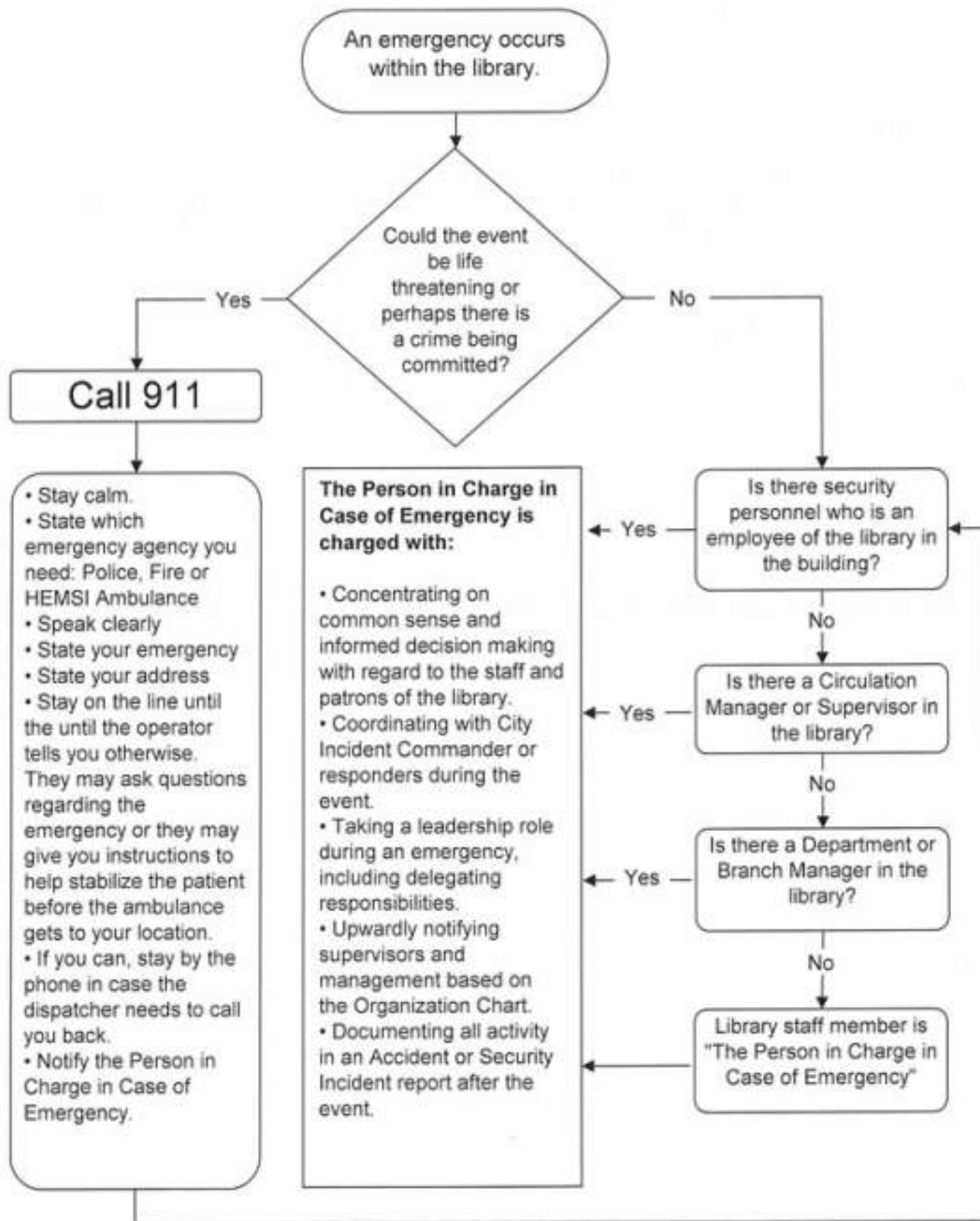
*Staff Training & Volunteer Coordinator*

The following items were found unusable and require repair or replacement:

\_\_\_\_\_  
\_\_\_\_\_

Signed: \_\_\_\_\_ Date: \_\_\_\_\_

**Appendix FF: Emergency Flow Chart**



**Appendix GG: Accident Report**

# ACCIDENT REPORT

Date: \_\_\_\_\_

Name (injured person): \_\_\_\_\_

Home Address: \_\_\_\_\_ City: \_\_\_\_\_ State: \_\_\_\_\_ Zip: \_\_\_\_\_

Phone: \_\_\_\_\_ Job Title: \_\_\_\_\_ Age: \_\_\_\_\_ Male: \_\_\_\_\_ Female: \_\_\_\_\_

Location of Accident: \_\_\_\_\_

Date of Accident: \_\_\_\_\_ Date Reported: \_\_\_\_\_

Time of Accident: \_\_\_\_\_ Time Reported: \_\_\_\_\_

Description of Accident (Attach Diagram if necessary): \_\_\_\_\_

Indoors:

Quality of Lighting:	Poor:	Good:	Excellent:		
Type of Floor:	Carpet:	Tile:	Concrete:	Wood:	Other:

Condition of Floor:

	Wet:	Dry:	Other:		
--	------	------	--------	--	--

Weather Conditions:

	Clear:	Rain:	Snow:	Winds:	
--	--------	-------	-------	--------	--

Other Conditions: \_\_\_\_\_

List tools, chemicals or machinery involved in the accident: \_\_\_\_\_

Describe injuries and part of the body affected: \_\_\_\_\_

Was Ambulance Requested? Yes: \_\_\_\_\_ No: \_\_\_\_\_

If YES, to which hospital was injured transported? \_\_\_\_\_

Was medical attention requested? Yes: \_\_\_\_\_ No: \_\_\_\_\_

If YES, describe attention / request given. \_\_\_\_\_

Was family / friend notified? Yes: \_\_\_\_\_ No: \_\_\_\_\_

If YES, list name and phone number of person notified: \_\_\_\_\_

Person in Charge in Case of Emergency:	Signature: _____
Witness:	Signature: _____
Witness:	Signature: _____
Witness:	Signature: _____

**Appendix HH: Security Incident Report**

# SECURITY INCIDENT REPORT

Reporting Security Officer: \_\_\_\_\_ Date: \_\_\_\_\_  
Type of Incident: \_\_\_\_\_ Time Occurred: \_\_\_\_\_

Victim(s) Name: \_\_\_\_\_  
Street: \_\_\_\_\_ City: \_\_\_\_\_ Phone: \_\_\_\_\_  
State: \_\_\_\_\_ Zip: \_\_\_\_\_

Contacts made (Police, Fire Department, Ambulance, Relatives, Library Director, etc.)  
\_\_\_\_\_  
\_\_\_\_\_

Criminal Case Report# \_\_\_\_\_ HPD Officers: \_\_\_\_\_

Suspect(s) / Offender(s) description (name, address, age or DOB, sex, race, school, etc.)  
\_\_\_\_\_  
\_\_\_\_\_

Witness: \_\_\_\_\_ Phone: \_\_\_\_\_  
Witness: \_\_\_\_\_ Phone: \_\_\_\_\_  
Witness: \_\_\_\_\_ Phone: \_\_\_\_\_

Property Description (stolen, lost, recovered, damaged, destroyed, etc.)  
\_\_\_\_\_  
\_\_\_\_\_  
\_\_\_\_\_

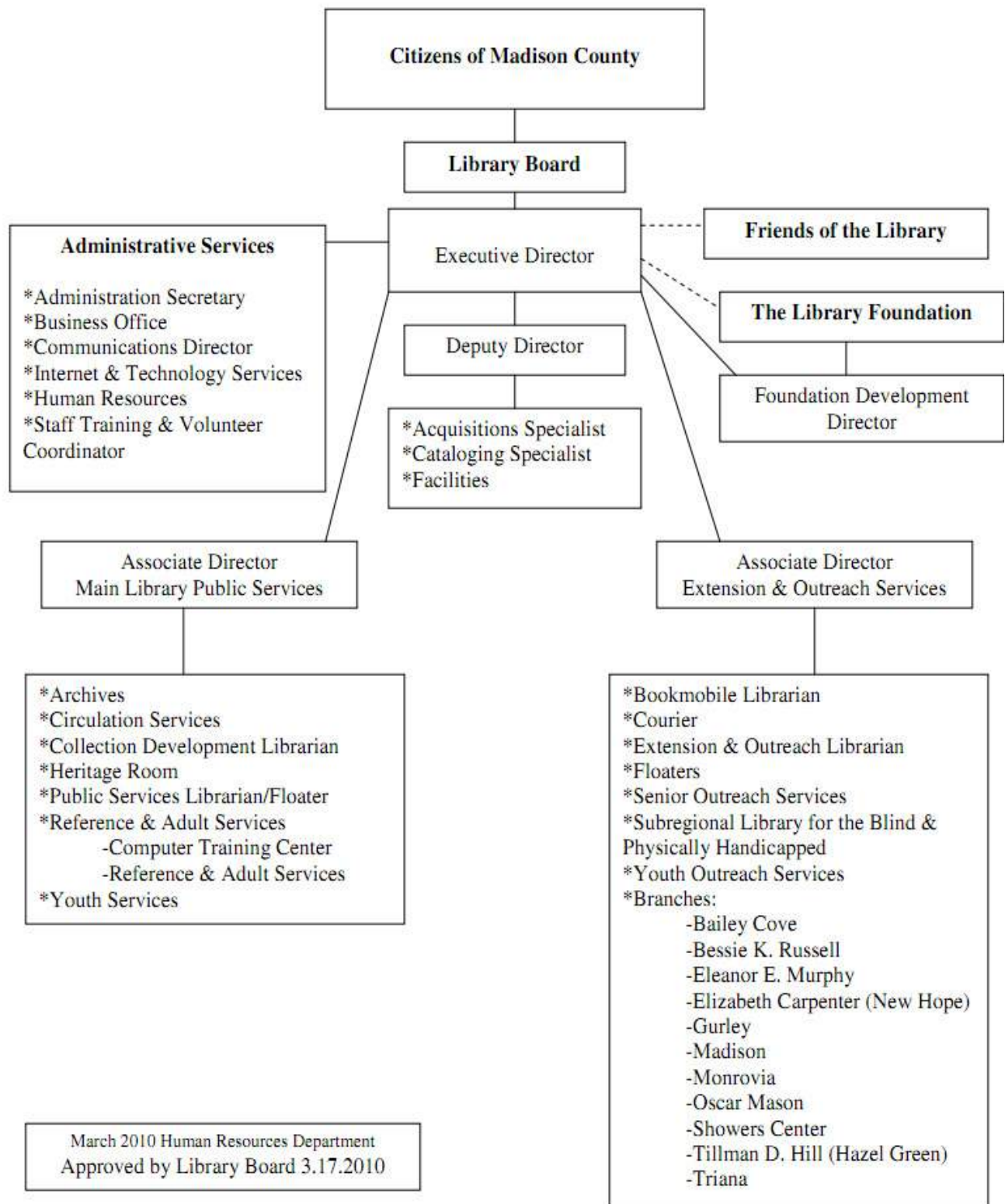
Outcome / Action (trespass warning, reprimand, released, arrested, no suspects, no action taken)  
\_\_\_\_\_  
\_\_\_\_\_  
\_\_\_\_\_

Describe your knowledge / observations of the incident (who what, where, when why):  
\_\_\_\_\_  
\_\_\_\_\_  
\_\_\_\_\_  
\_\_\_\_\_  
\_\_\_\_\_

Report Prepared by: \_\_\_\_\_ Phone: \_\_\_\_\_

Copy to: Security, Circulation Manager, Associate Director and Director.

## Appendix II: Organizational Chart

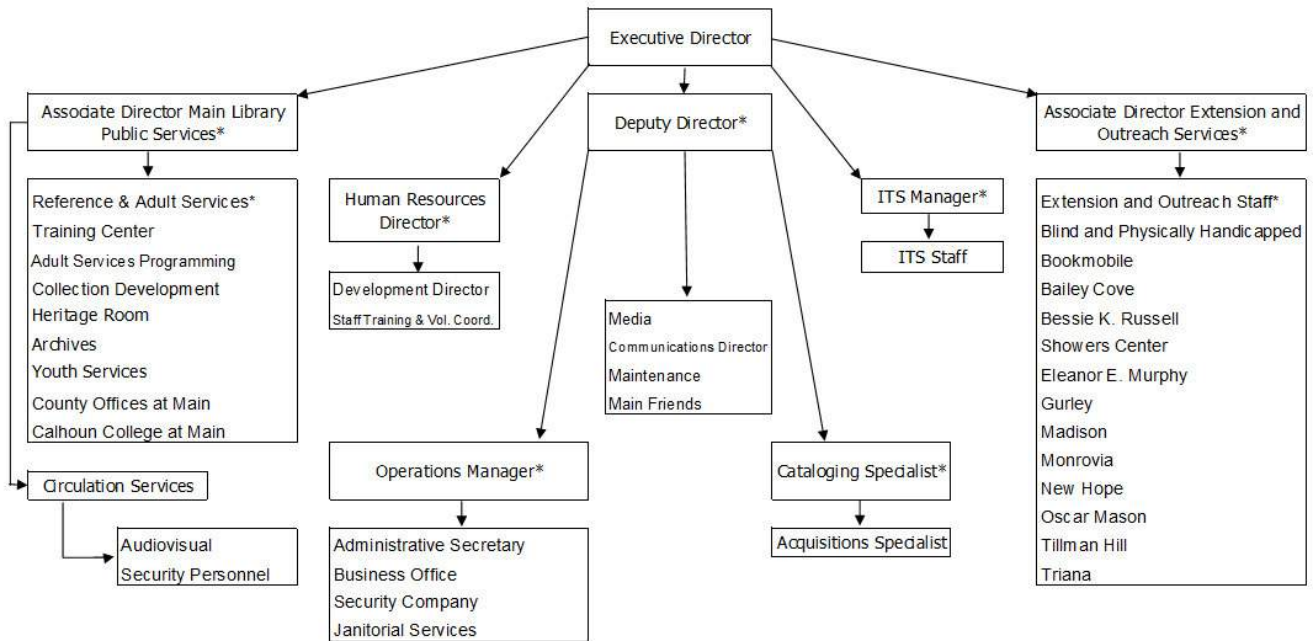


# Appendix JJ: Emergency Communications Tree

## HUNTSVILLE MADISON COUNTY PUBLIC LIBRARY

### EMERGENCY COMMUNICATIONS TREE

In the event of an emergency which prevents the library from opening the Executive Director will notify the Deputy Director, Associate Directors and the ITS Manager. Communications proceed according to the chart below, numbers are available at <http://staffspace/directory>. Interns, volunteers, meeting room users and Friends in all locations should be encouraged to check with local media during an emergency for library dosures.



\*Supervisors of these areas are designated backups. If a person is unreachable please continue the succession of phone calls so that all staff will be contacted. If you do not receive a call and you are working that day please call your supervisor, the designated backup, or check the news for closing information.

3/3/2011

**THE LIBRARY IS CONCERNED FOR YOUR HEALTH.**

**In response to current or potential viral influenza outbreaks, the Library will follow guidelines provided by the Centers for Disease Control, The Alabama Department of Public Health and the Emergency Management Agency of Madison County.**

**There are alcohol-based hand and computer-peripheral cleaners available to the public.**

**The Alabama Department of Public Health recommends that if you become ill with influenza-like symptoms, including fever, body aches, runny or stuffy nose, sore throat, nausea, or vomiting or diarrhea, you should stay home and avoid contact with other people.**



**Appendix LL: Flu Placard**

**THE LIBRARY IS CONCERNED FOR YOUR HEALTH.**

**To avoid viral contamination, please take  
an alcohol-based wipe and clean your  
keyboard and mouse prior to using a  
public computer.**





This page intentionally left blank.

This page intentionally left blank.